

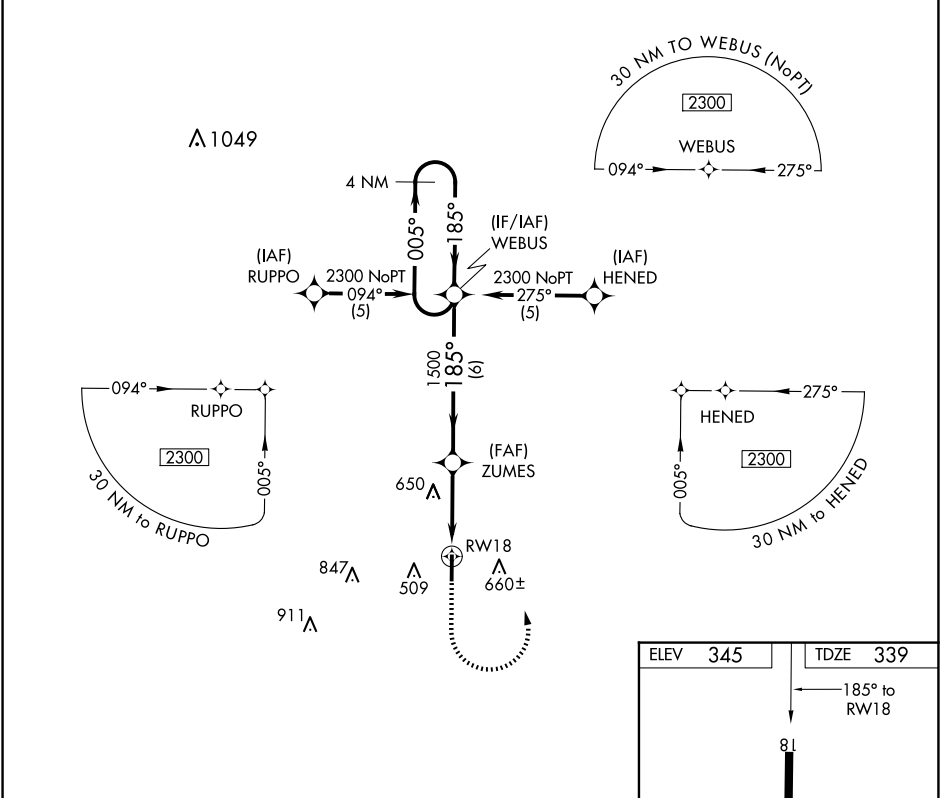
APP CRS 185°	Rwy Idg	4220
	TDZE	339
	Apt Elev	345

RNAV (GPS) RWY 18

DR C P SAVAGE SR (53A)

<div><div><div>▼</div><div>NA</div></div></div> <div>DME/DME RNP-0.3 NA. Procedure NA at night. Helicopter visibility reduction below 1 SM NA. Use Americus altimeter setting, when not received use Macon altimeter setting and increase all MDA 20 feet.</div>	MISSED APPROACH: Climb to 1500 then climbing left turn to 2300 direct WEBUS and hold.
--	---

ACJ AWOS-3 128.375	ATLANTA APP CON ★ 124.2 279.6	CTAF 122.9 0
------------------------------	---	------------------------



VGSI and descent angles not coincident (VGSI Angle 3.30/TCH 35).				
4 NM Holding Pattern				
WEBUS				
2300 ← 005° 185° →				
3.03° TCH 45				
ZUMES				
1500				
RW18				
6 NM 3.5 NM				
CATEGORY	A	B	C	D
LNVA MDA	1020-1	681 (700-1)	1020-2 681 (700-2)	NA
CIRCLING	1020-1	675 (700-1)	1120-2¼ 775 (800-2¼)	NA

