

WAAS CH <b>56339</b> <b>W04A</b>	APP CRS <b>035°</b>	Rwy Idg <b>7398</b> TDZE <b>5837</b> Apt Elev <b>5837</b>
--	------------------------	---

RNAV (GPS) RWY 4

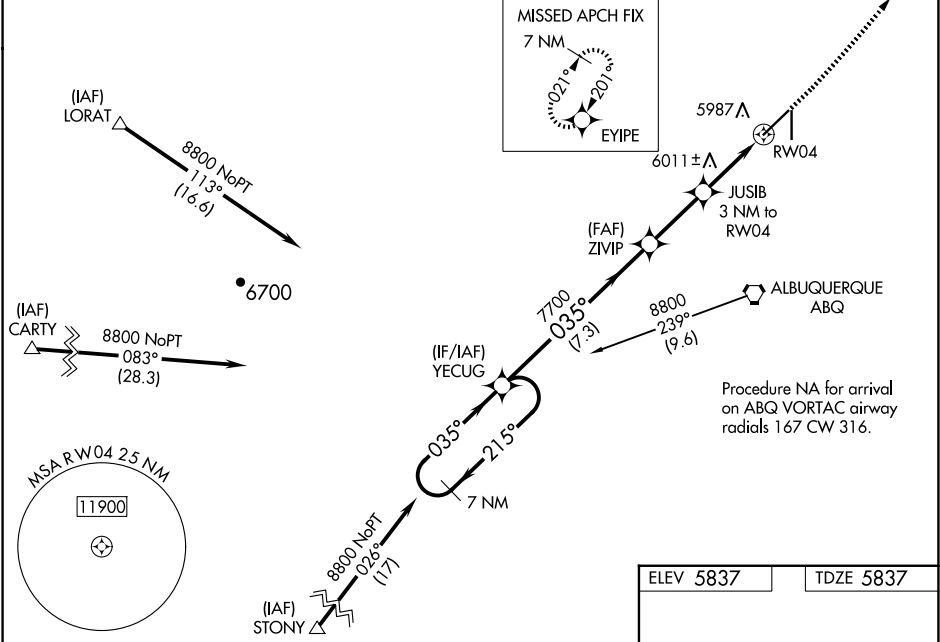
DOUBLE EAGLE II (A/E/G)

⚠

DME/DME RNP-0.3 NA. When local altimeter setting not received, use Albuquerque Intl Support altimeter setting and increase LPV DA to 6131 feet and LNAV/VNAV DA to 6384 feet, increase all MDA 100 feet, and increase LPV all Cats visibility ½ mile, LNAV/VNAV all Cats visibility ¾ mile, LNAV visibility Cat C/D ¼ mile, and Circling visibility Cats C/D ½ mile. Baro-VNAV and VDP NA when using Albuquerque Intl Support altimeter setting. For uncompensated Baro-VNAV systems, LNAV/VNAV NA below -26°C (-14°F) or above 46°C (114°F).

MISSED APPROACH: Climb to 6300 then climbing left turn to 8600 direct EYIPE and hold.

ATIS <b>119.025</b>	ALBUQUERQUE APP CON <b>127.4 253.5</b>	DOUBLE EAGLE II TOWER ★ <b>120.15 (CTAF) 0</b>	GND CON <b>121.625</b>	CLNC DEL <b>124.8</b> (When twr closed)
------------------------	---	---	---------------------------	---



7 NM Holding Pattern		YECUG	ZIVIP	JUSIB	RW04
8800		7700	7700	3 NM to RW04	1.3 NM to RW04
GP 3.00° TCH 55		035°	035°	035°	035°
7.3 NM		2.7 NM	1.7 NM	1.3 NM	
CATEGORY	A	B	C	D	
LPV DA	6037-¾		200 (200-¾)		
LNAV/VNAV DA	6290-1½		453 (500-1½)		
LNAV MDA	6300-1	463 (500-1)	6300-1¾	463 (500-1¾)	
CIRCLING	6400-1	563 (600-1)	6420-1½ 583 (600-1½)	6640-2½ 803 (900-2½)	

