

APP CRS
183°

Rwy Idg
2609

TDZE
777

Apt Elev
779

RNAV (GPS) RWY 18

PAXTON (1C1)

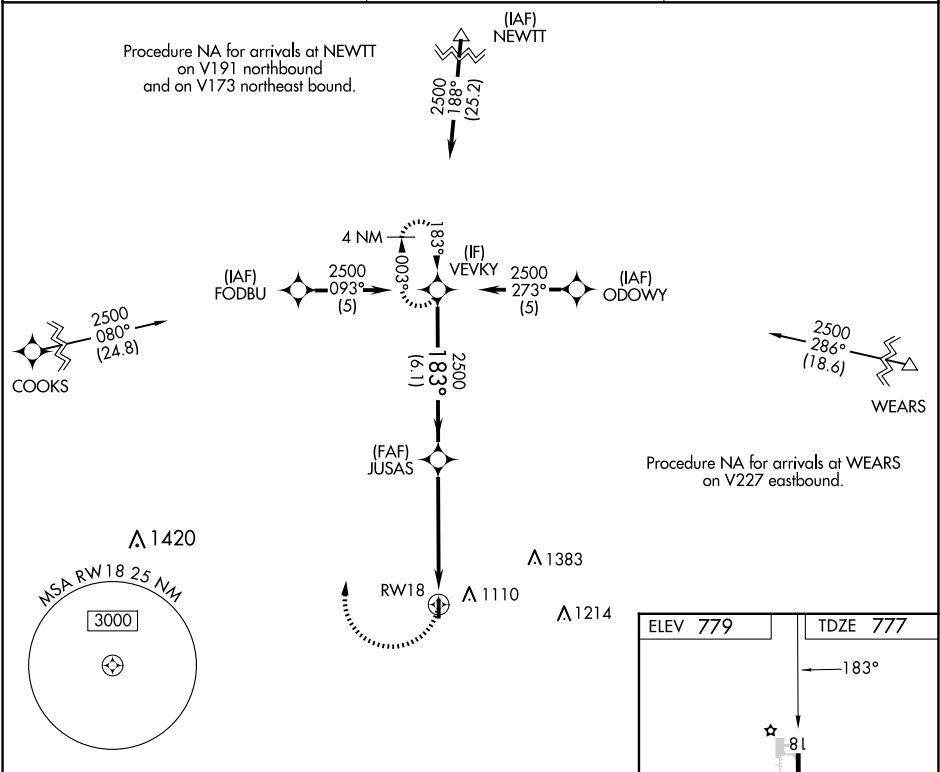
▼

NA

DME/DME RNP-0.3 NA. Helicopter visibility reduction below 1 SM NA. Use Champaign-Urbana altimeter setting; when not received, use Decatur altimeter setting and increase all MDA 80 feet; increase LNAV Cat C and Circling all Cats visibility ¼ SM. Procedure NA at night.

MISSED APPROACH: Climbing right turn to 2500 direct VEVKY and hold.

CMI ASOS 124.85	CHAMPAIGN APP CON ★ 121.35 285.65	UNICOM 122.8 (CTAF)
--------------------	--------------------------------------	------------------------



Procedure Turn NA

2500

VEVKY

JUSAS

2500

3.04°

TCH 42

6.1 NM

5.2 NM

183°

183°

2500

VEVKY

CATEGORY	A	B	C	D
LNAV MDA	1400-1	623 (700-1)	1400-1¾ 623 (700-1¾)	NA
CIRCLING	1540-1 761 (800-1)	1540-1¼ 761 (800-1¼)	1620-2½ 841 (900-2½)	NA

ELEV 779

TDZE 777

183°

81

3409 X 50

0.7% UP

36

LIRL Rwys 18-36

REIL Rwy 18