

WAAS CH 86333 W09A	APP CRS 095°	Rwy Ldg TDZE 4086 Apt Elev 4094
--	------------------------	---

RNAV (GPS) RWY 9

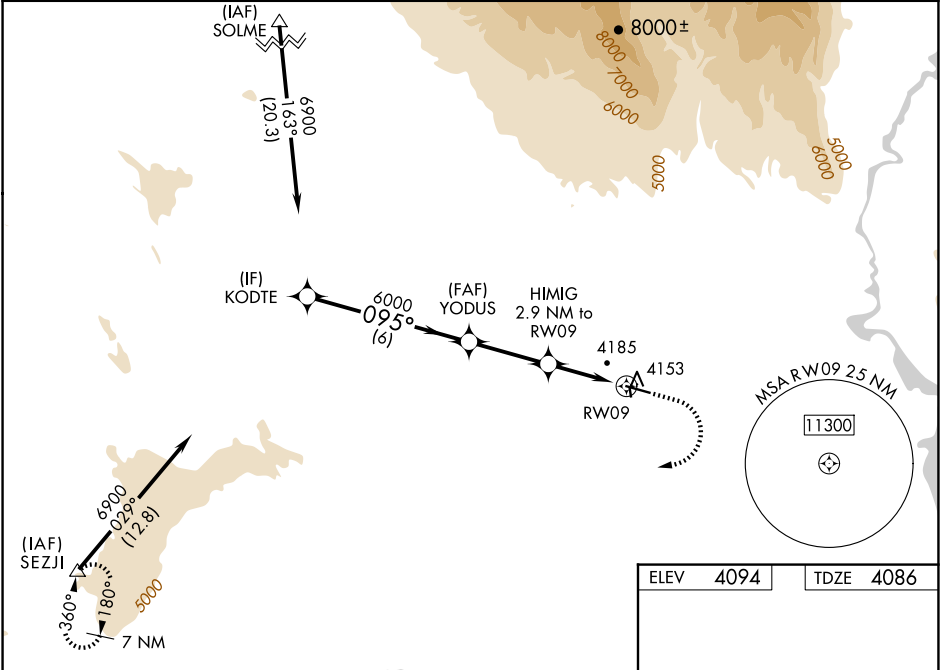
NORTH BIG HORN COUNTY (U68)

RNP APCH - GPS

Baro-VNAV NA when using Greybull altimeter setting. For uncompensated Baro-VNAV systems, LNAV/VNAV NA below -23°C or above 49°C. When Rwy 9 VGSi inop, Straight-in and Circling minimums NA at night. Helicopter visibility reduction below 1 SM NA. When local altimeter setting not received, use Greybull altimeter setting and increase all DA 87 feet and all LPV and LNAV/VNAV visibility $\frac{1}{8}$ mile, increase all MDA 100 feet and LNAV Cats C/D visibility $\frac{3}{8}$ mile and increase Circling Cat C visibility $\frac{1}{4}$ mile. Circling NA to Rwy 16 and 34.

MISSED APPROACH: Climb to 4600 then climbing right turn to 8500 direct SEZJI and hold.

AWOS-3 119.925	SALT LAKE CENTER 133.25 285.6	UNICOM 123.0 (CTAF)
--------------------------	---	-------------------------------



VGSI and RNAV glidepath not coincident (VGSI Angle 3.00/TCH 40).

4600

8500

SEZJI

KODTE

YODUS

HIMIG 2.9 NM to RW09

RW09

6900

6000

5060

GP 3.00°

TCH 55

* LNAV only.

6 NM

2.9 NM

2.9 NM

CATEGORY	A	B	C	D
LPV DA		4336-1	250 (300-1)	
LNAV/VNAV DA		4344-1	258 (300-1)	
LNAV MDA		4440-1	354 (400-1)	
CIRCLING	4520-1 426 (500-1)	4680-1 586 (600-1)	4940-2½ 846 (900-2½)	5260-3 1166 (1200-3)

REIL Rwy 9 and 27

MIRL Rwy 9-27