

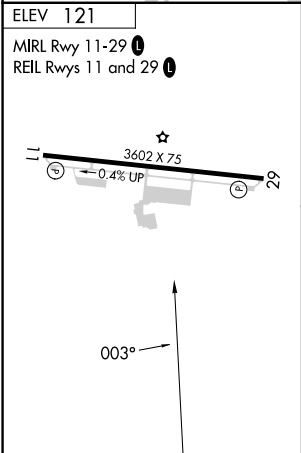
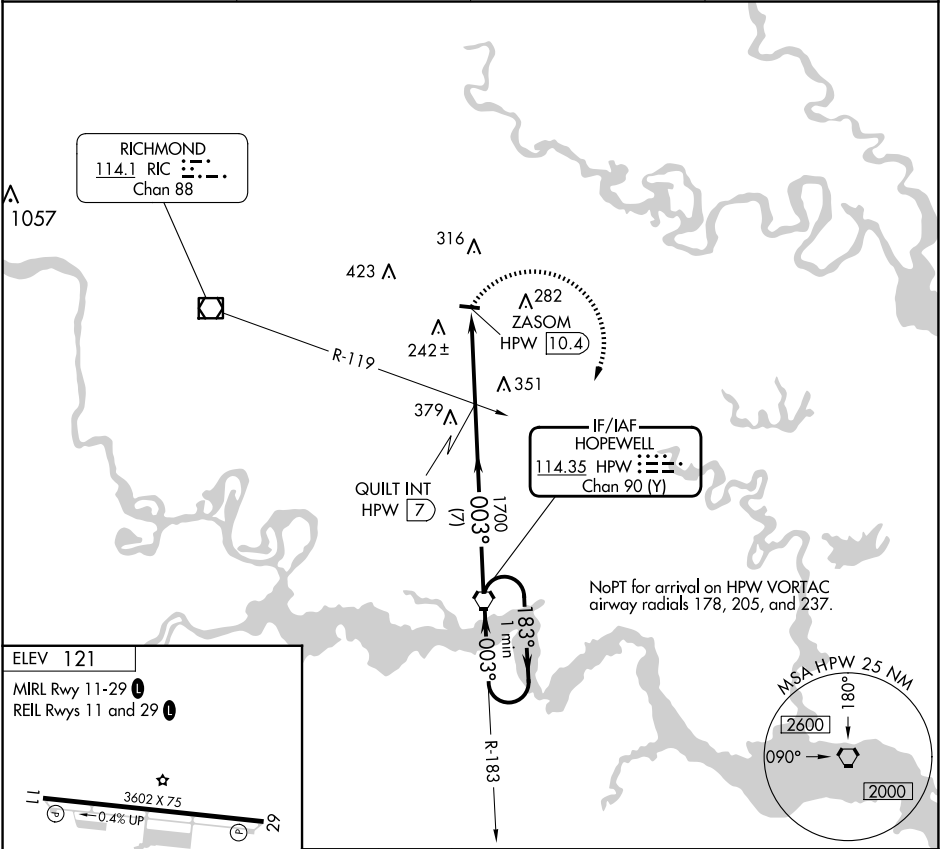
VORTAC HPW	APP CRS	Rwy Idg	N/A
114.35	003°	TDZE	N/A
Chan 90 (Y)		Apt Elev	121


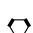
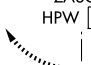






VOR-A

NEW KENT COUNTY (W96)

<div><div>NA</div><div>Use Richmond Intl altimeter setting. Procedure NA at night. Helicopter visibility reduction below 1 SM NA.</div></div>	MISSED APPROACH: Climbing right turn to 2000 direct HPW VORTAC and hold.
---	--

AWOS-3	RIC ASOS	POTOMAC APP CON	UNICOM
119.875	119.15 263.025	126.4 282.375	122.8 (CTAF) 0



2000	HPW			
				
ZASOM HPW 10.4		QUILT INT HPW 7	HPW VORTAC	One Minute Holding Pattern
				2000
				
3.4 NM		7 NM		
CATEGORY	A	B	C	D
 CIRCLING	660-1 539 (600-1)		760-1¾ 639 (700-1¾)	NA