

WAAS CH 90532 W29A	APP CRS 286°	Rwy Idg TDZE 120 Apt Elev 121
--	------------------------	---

RNAV (GPS) RWY 29

NEW KENT COUNTY (W96)

RNP APCH - GPS.

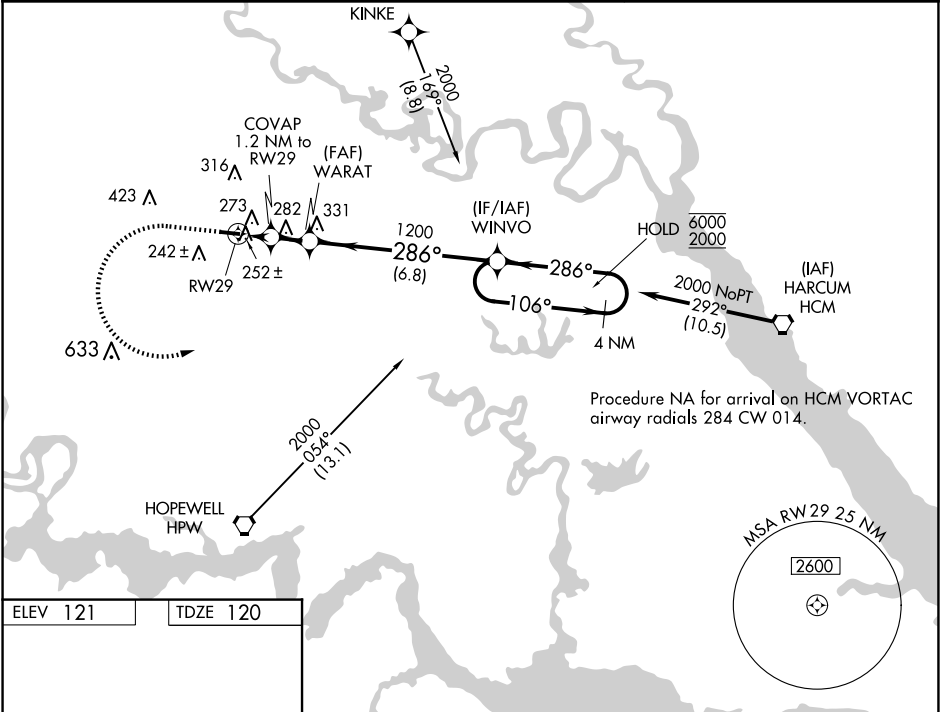
▼

▲

Rwy 29 helicopter visibility reduction below 1 SM NA.
Procedure NA at night. When local altimeter setting not received,
use RIC altimeter setting: increase all MDAs 40 feet and LNAV visibility
Cat C ½ SM; increase LP and Circling visibility Cat C ¼ SM.

MISSED APPROACH: Climb to 900 then climbing left turn to 2000 direct WINVO and hold.

AWOS-3 119.875	POTOMAC APP CON 126.4 282.375	UNICOM 122.8 (CTAF) 0
--------------------------	---	---------------------------------



ELEV 121 TDZE 120

900

2000

WINVO

VGSI and descent angles not coincident (VGSI Angle 4.00/TCH 45).

4 NM Holding Pattern

WINVO

106° → 6000

← 286° 2000

COVAP 1.2 NM to RW29

WARAT

1200

640

3.77° TCH 60

1.2 NM 1.4 NM 6.8 NM

3602 X 75

0.4% UP

286°

MIRL Rwy 11-29 1

REIL Rws 11 and 29 1

CATEGORY	A	B	C	D
LP MDA	540-1	420 (500-1)	540-1 ⅛ 420 (500-1 ⅛)	NA
LNAV MDA	560-1	440 (500-1)	560-1 ¼ 440 (500-1 ¼)	NA
CIRCLING	620-1	499 (500-1)	760-1 ¾ 639 (700-1 ¾)	NA