

APP CRS
165°

Rwy Idg
TDZE
Apt Elev

3657
870
873

RNAV (GPS) RWY 17

BOURLAND FLD (501F)

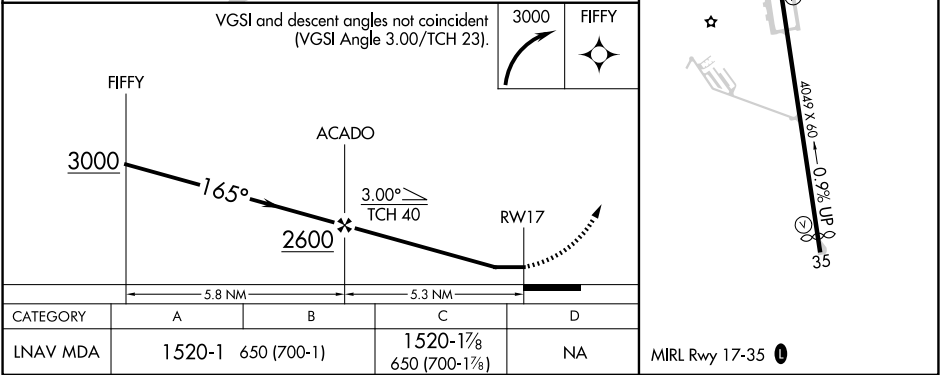
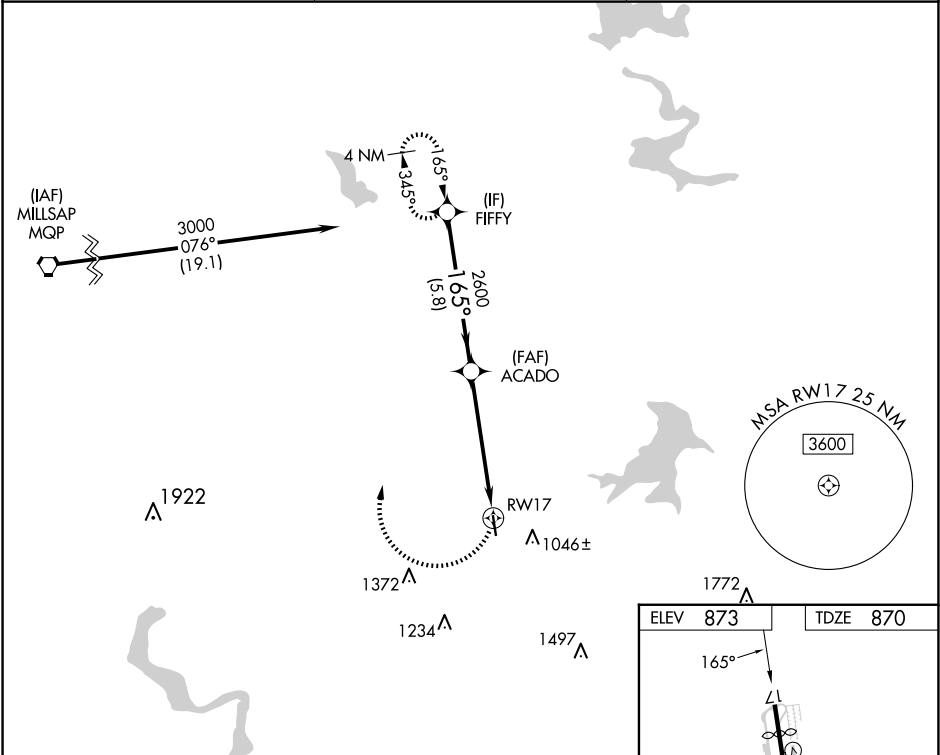
RNP APCH - GPS.

NA

Procedure NA at night. Rwy 17 helicopter visibility reduction below 1 SM NA.

MISSED APPROACH: Climbing right turn to 3000 direct FIFFY and hold.

CPT AWOS-3 119,525	LONE STAR APP CON 135,975 379.9	UNICOM 123.0 (CTAF) 0
-----------------------	------------------------------------	--------------------------



SC-2, 07 AUG 2025 to 04 SEP 2025

SC-2, 07 AUG 2025 to 04 SEP 2025