

24193

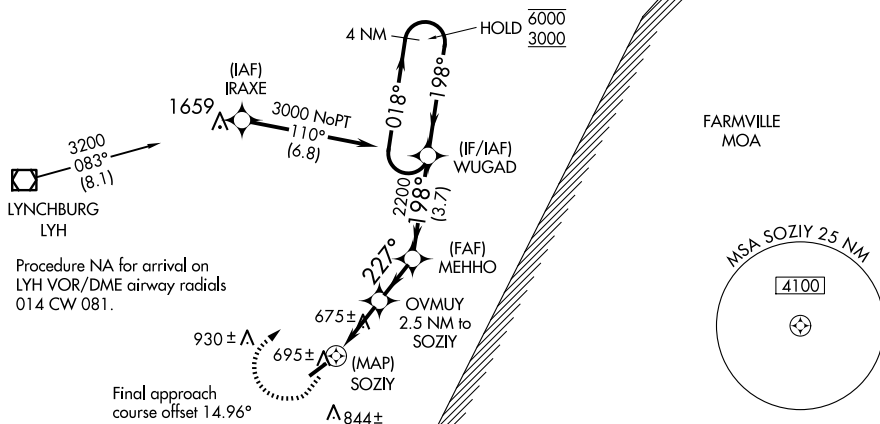
RNAV (GPS) RWY 24

BROOKNEAL/CAMPBELL COUNTY (ØV4)

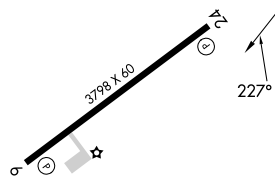
T When local altimeter setting not received, use Lynchburg Rgnl/Preston Glenn Fld
A altimeter setting and increase all MDA 100 feet.

MISSED APPROACH: Climb to 1000 then climbing right turn to 3000 direct WUGAD and hold.

AWOS-3 120.575	ROANOKE APP CON 135.0 254.325	UNICOM 122.7 (CTAF) ①
--------------------------	---	---------------------------------



ELEV	597		TDZE	596
------	-----	--	------	-----



<div><div>1000 ↑</div><div>3000 ↗</div><div>WUGAD ✦</div></div>		<div>MEHHO 3.00° TCH 45° 198° 2200 227° 1580 SOZFY 2.5 NM to SOZFY WUGAD 4 NM Holding Pattern 018° 198° 6000 3000</div>		
<div><div>0.5</div><div>2.5 NM</div><div>1.9 NM</div><div>3.7 NM</div></div>				
CATEGORY	A	B	C	D
LP MDA	940-1	344 (400-1)	NA	
RNAV MDA	960-1	364 (400-1)	NA	
CIRCLING	1120-1 523 (600-1)	1180-1 583 (600-1)	NA	

BROOKNEAL/CAMPBELL COUNTY (ØV4)
RNAV (GPS) RWY 24