

DENVER, COLORADO

AL-6851 (FAA)

25219

WAAS CH 93809 W35A	APP CRS 352°	Rwy Ldg 8000 TDZE 5515 Apt Elev 5515
--	------------------------	---

RNAV (GPS) RWY 35

COLORADO AIR AND SPACE PORT (CFO)

RNP APCH.

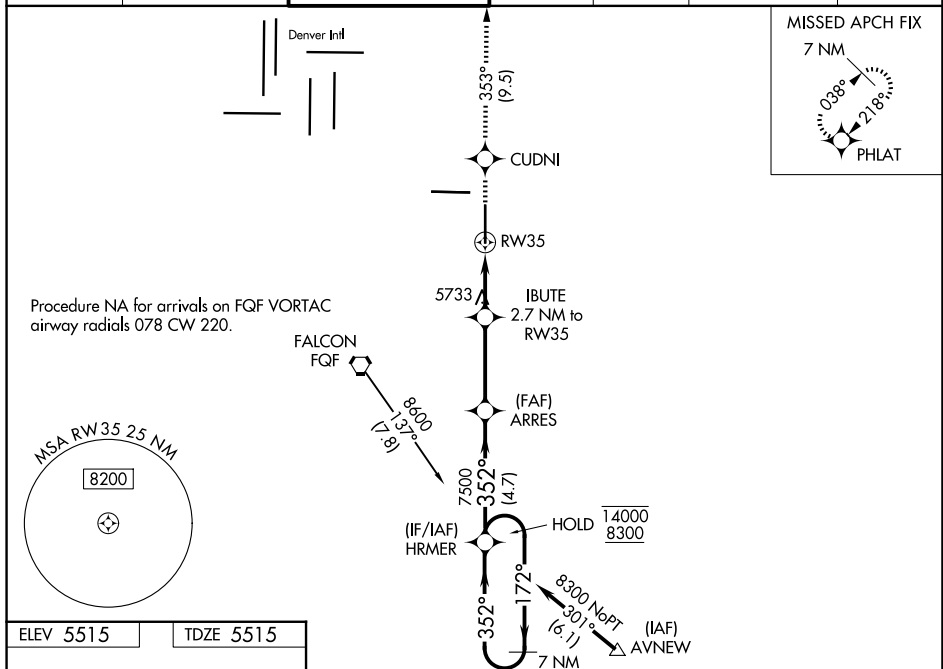
T For uncompensated Baro-VNAV systems, LNAV/VNAV NA
A below -25°C or above 46°C. For inop ALS, increase
 LNAV/VNAV all Cats visibility to $\frac{7}{8}$ SM.

MALSR

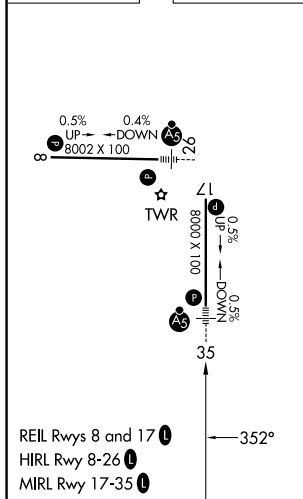


MISSED APPROACH: Climb to 8000 direct CUDNI and on track 353° to PHLAT and hold.

ATIS 119.025	DENVER APP CON 128.25 371.95	SPACE PORT TOWER ★ 120.2 (CTAF) 0	GND CON 124.7	CLNC DEL 124.7	CLNC DEL 121.75 (When twr closed)	UNICOM 122.95
-----------------	---------------------------------	--------------------------------------	------------------	-------------------	---	------------------



ELEV 5515		TDZE 5515
-----------	--	-----------



8000	CUDNI	PHILAT		
* LNAV only		IBUTE		
		2.7 NM to RW35		
tr 353°		*1.5 NM to RW35		
		ARRES	HRMER	7 NM Holding Pattern
		7500	352°	172° → 14000 ← 352° 8300
		6420*	7500	GP 3.00° TCH 54
→ 1.5 NM ←		→ 1.2 NM ←	→ 3.4 NM ←	→ 4.7 NM ←
CATEGORY	A	B	C	D
LPV DA	5715-½ 200 (200-½)			
VNAV/ VNAV DA	5783-½ 268 (300-½)			
LNAV MDA	6040-½ 525 (600-½)		6040-1 525 (600-1)	
CIRCLING	6040-1 525 (600-1)		6100-1½ 585 (600-1½)	6300-2½ 785 (800-2½)

DENVER, COLORADO
Amdt 2A 30JAN20

39°47'N-104°32'W

COLORADO AIR AND SPACE PORT (CFO) RNAV (GPS) RWY 35

SW-1, 07 AUG 2025 to 04 SEP 2025