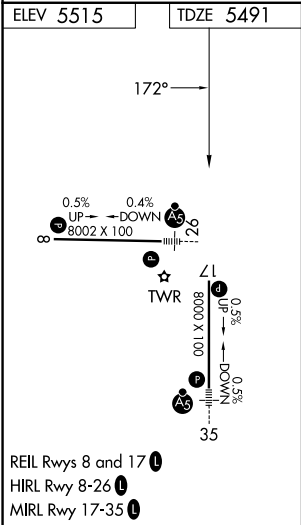
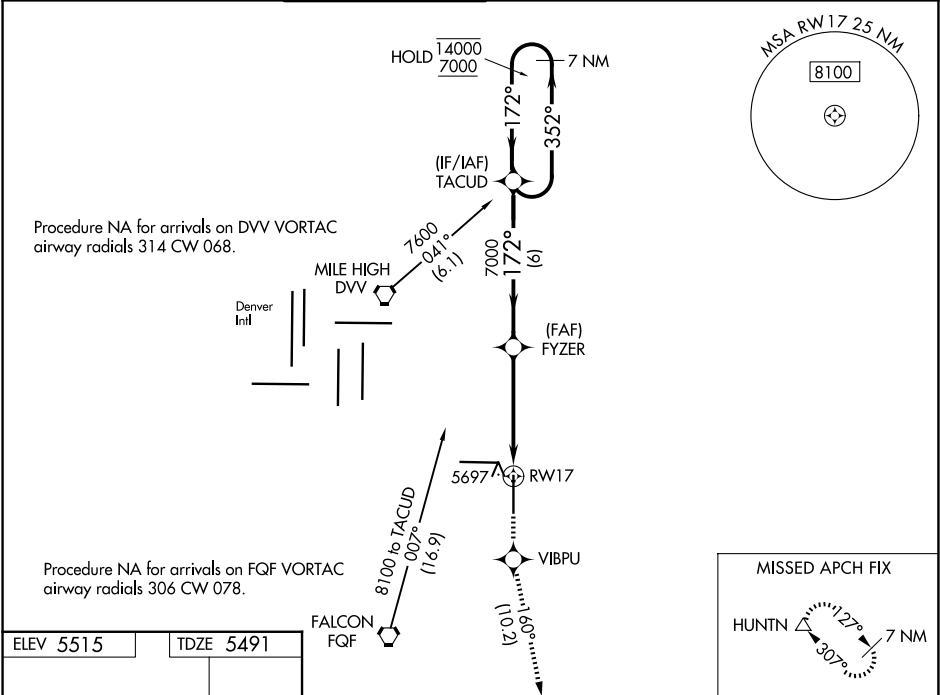


WAAS CH 82209 W17A	APP CRS 172°	Rwy Ldg TDZE 5491 Apt Elev 5515
----------------------------------------	------------------------	-----------------------------------------------------------

RNAV (GPS) RWY 17

COLORADO AIR AND SPACE PORT (CFO)

RNP APCH-GPS.			MISSED APPROACH: Climb to 8500 direct VIBPU and on track 160° to HUNTN and hold.			
For uncompensated Baro-VNAV systems, LNAV/VNAV NA below -25°C or above 48°C.						
ATIS 119.025	DENVER APP CON 128.25 371.95	SPACE PORT TOWER ★ 120.2 (CTAF) 0	GND CON 124.7	CLNC DEL 124.7	CLNC DEL 121.75 (When twr closed)	UNICOM 122.95



7 NM Holding Pattern		TACUD	FYZER	8500	VIBPU	HUNTN
14000 7000		352° 172°	172° 7000	8500	VIBPU	HUNTN
GP 3.00° TCH 55		6 NM	3.1 NM	1.5 NM		
CATEGORY	A	B	C	D		
LPV DA	5691-3/4 200 (200-3/4)					
LNAV/VNAV DA	5916-1 3/8 425 (500-1 3/8)					
LNAV MDA	6000-1	509 (500-1)	6000-1 1/2	509 (500-1 1/2)		
CIRCLING	6000-1	485 (500-1)	6100-1 1/2 585 (600-1 1/2)	6300-2 1/2 785 (800-2 1/2)		