

(PIKES3.DEN) 25163
PIKES THREE DEPARTURE

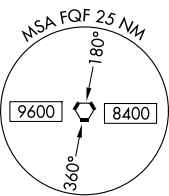
AL-6851 (FAA) COLORADO AIR AND SPACE PORT (CFO)
DENVER, COLORADO

DENVER DEP CON
128.25 371.95
ATIS
119.025
CLNC DEL
124.7
CLNC DEL
121.75 (when twr closed)

RADAR required.

TOP ALTITUDE:
ASSIGNED BY ATC

TAKEOFF MINIMUMS
All Rwys: Standard.



MOCA 14300 for
ALAMOSA Transition.

ALAMOSA
113.9 ALS
Chan 86

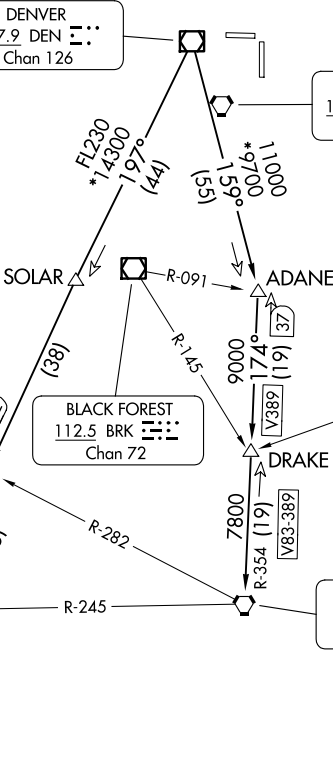
DENVER
117.9 DEN
Chan 126

FALCON
116.3 FQF
Chan 110

HUGO
112.1 HGO
Chan 58

BLACK FOREST
112.5 BRK
Chan 72

PUEBLO
116.7 PUB
Chan 114



DEPARTURE ROUTE DESCRIPTION

TAKEOFF ALL RUNWAYS: Fly assigned heading and altitude for RADAR vectors to assigned route. Expect filed altitude 10 minutes after departure.

LOST COMMUNICATIONS: If no transmissions are received within one minute after departure, maintain assigned heading until 7000, then climb to filed altitude direct to DEN VOR/DME, then on assigned route. If filed altitude is above 10000, cross DEN VOR/DME at or above 11000.

ALAMOSA TRANSITION (PIKES3.ALS): From over DEN VOR/DME on DEN R-197 to TEHEV, then on ALS R-002 to ALS VORTAC.

BINKE TRANSITION (PIKES3.BINKE): From over DEN VOR/DME on DEN R-197 to TEHEV, then on ALS R-002 to BINKE.

PUEBLO TRANSITION (PIKES3.PUB): From over DEN VOR/DME on DEN R-159 to ADANE, then on PUB R-354 to PUB VORTAC.