

ILS or LOC RWY 35  
COLORADO AIR AND SPACE PORT (CFO)

**MISSED APPROACH:** Climb to 7500 on heading 352° and on GLL VOR/DME R-164 to PHLAT INT/DVV 6.6 DME and hold.

MILE HIGH  
114.7 DVV  
Chan 94

Denver Intl

8.300  
154°  
(114.7)

11.42 GIL  
R-164  
Chan 89

LOCALIZER  
F-VWT  
Chan 46  
110.9

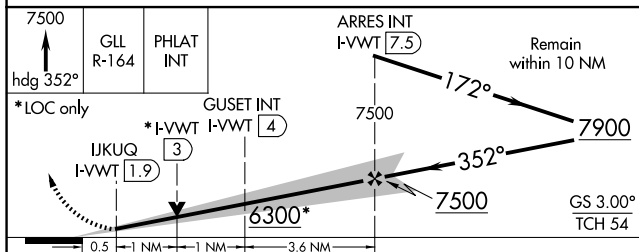
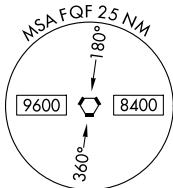
11.42 GIL  
R-164  
Chan 89

MISSED APCH FIX

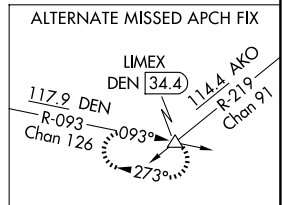
PHILAT INT DVV 6.6

11.47 DVV  
R-038  
Chan 94

FALCON  
116.3 FQF  $\begin{smallmatrix} \text{::} & \text{::} \\ \text{::} & \text{::} \end{smallmatrix} \text{--}$   
Chan 110



CATEGORY	A	B	C	D
S-ILS 35	5715-1/2 200 (200-1/2)			
S-LOC 35	6300-1/2 785 (800-1/2)	6300-3/4 785 (800-3/4)	6300-13/4 785 (800-13/4)	
GUEST FIX MINIMUMS (DUAL VOR RECEIVERS OR DME REQUIRED)				
S-LOC 35	6040-1/2 525 (600-1/2)		6040-1 525 (600-1)	



ELEV 5515      TDZE 5515

0.5% UP → 0.4% DOWN  
8002 X 100

0.5% DOWN  
8000 X 100

0.5% UP → 0.5% DOWN  
35

352°

REIL Rwy 8 and 17  
HIRL Rwy 8-26  
MIRL Rwy 17-35

FAF to MAP 5.6 NM

Knots	60	90	120	150	180
Min:Sec	5:36	3:44	2:48	2:14	1:52