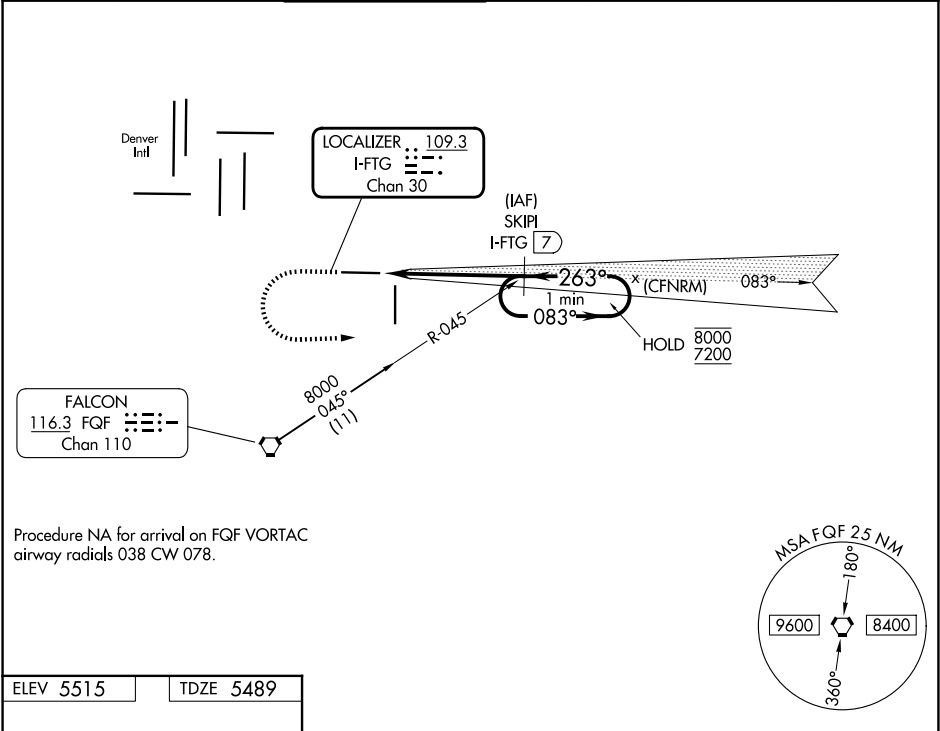


LOC/DME I-FTG	APP CRS	Rwy Ldg	8002
109.3	263°	TDZE	5489
Chan 30		Apt Elev	5515

ILS or LOC RWY 26
COLORADO AIR AND SPACE PORT (CFO)

DME required.		MALSR	MISSED APPROACH: Climb to 6100 then climbing left turn to 7200 on heading 080° and on FQF VORTAC R-045 to SKIPI/I-FTG 7 DME and hold.		
▼	For inop ALS, increase S-LOC 26 Cat C/D visibility to 1 1/8 SM. Autopilot coupled approach NA below 6250 MSL.				
ATIS	DENVER APP CON	SPACE PORT TOWER ★	GND CON	CLNC DEL	CLNC DEL
119.025	128.25 371.95	120.2 (CTAF) 1	124.7	124.7	121.75 (When twr closed)
				UNICOM	
				122.95	



ELEV 5515	TDZE 5489
-----------	-----------

