

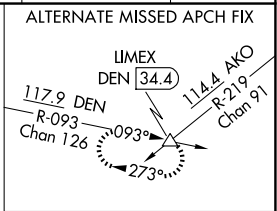
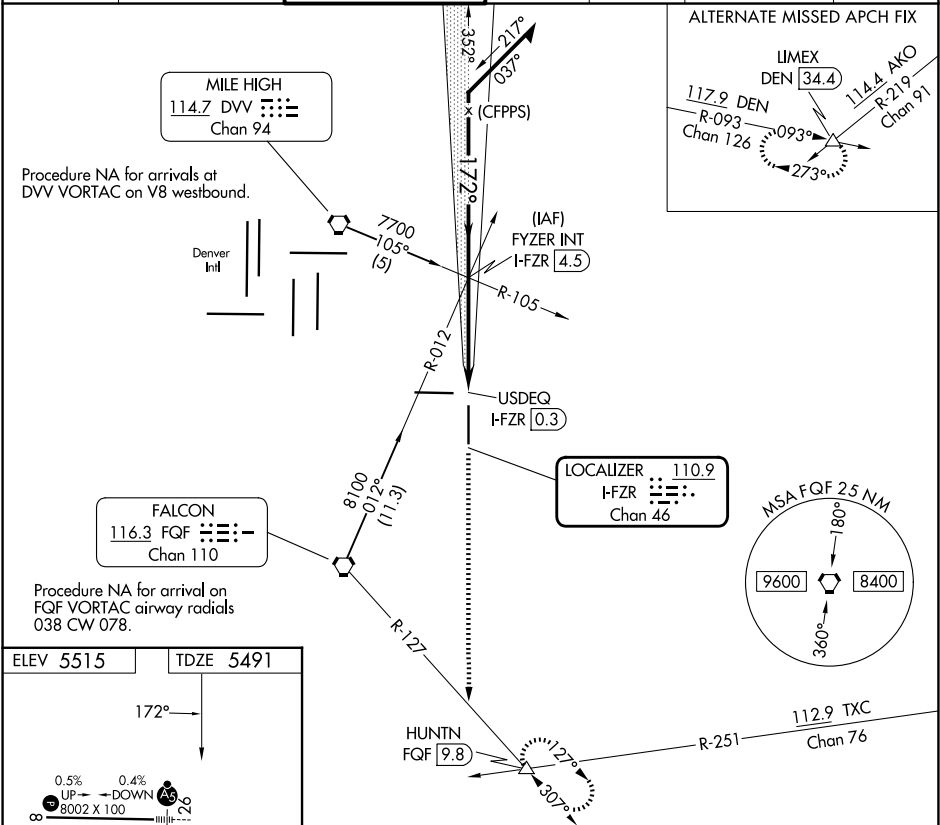
LOC/DME I-FZR 110.9 Chan 46	APP CRS 172°	Rwy Ldg TDZE Apt Elev 8000 5491 5515
---	------------------------	--

ILS or LOC RWY 17
COLORADO AIR AND SPACE PORT (C'FO)

⚠

MISSED APPROACH: Climb to 8500 on heading 172° and FQF VORTAC R-127 to HUNTN INT/FQF 9.8 DME and hold.

ATIS 119.025	DENVER APP CON 128.25 371.95	SPACE PORT TOWER ★ 120.2 (CTAF) ①	GND CON 124.7	CLNC DEL 124.7	CLNC DEL 121.75 (When twr closed)	UNICOM 122.95
------------------------	--	--	-------------------------	--------------------------	--	-------------------------



ELEV 5515	TDZE 5491
REIL Rws 8 and 17 ① HIRL Rwy 8-26 ① MIRL Rwy 17-35 ①	
FAF to MAP 4.1 NM	
Knots	60 90 120 150 180
Min:Sec	4:06 2:44 2:03 1:38 1:22

Remain within 10 NM	FYZER INT I-FZR 4.5	8500 hdg 172°	FQF R-127	HUNTN △
7000	7000	7000	7000	7000
GS 3.00°	TCH 55	USDEQ I-FZR 0.3	I-FZR DME ANTENNA	
4.1 NM 0.5 NM				
CATEGORY	A	B	C	D
S-ILS 17	5691-3/4 200 (200-3/4)			
S-LOC 17	5820-1 329 (400-1)			
CIRCLING	6000-1	485 (500-1)	6100-1 1/2 585 (600-1 1/2)	6300-2 1/2 785 (800-2 1/2)