

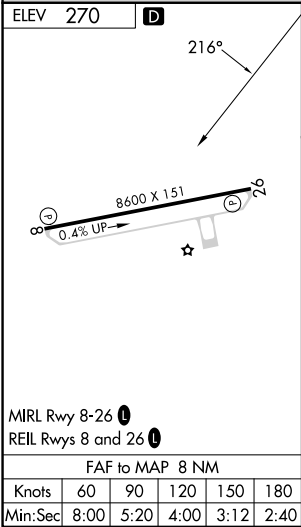
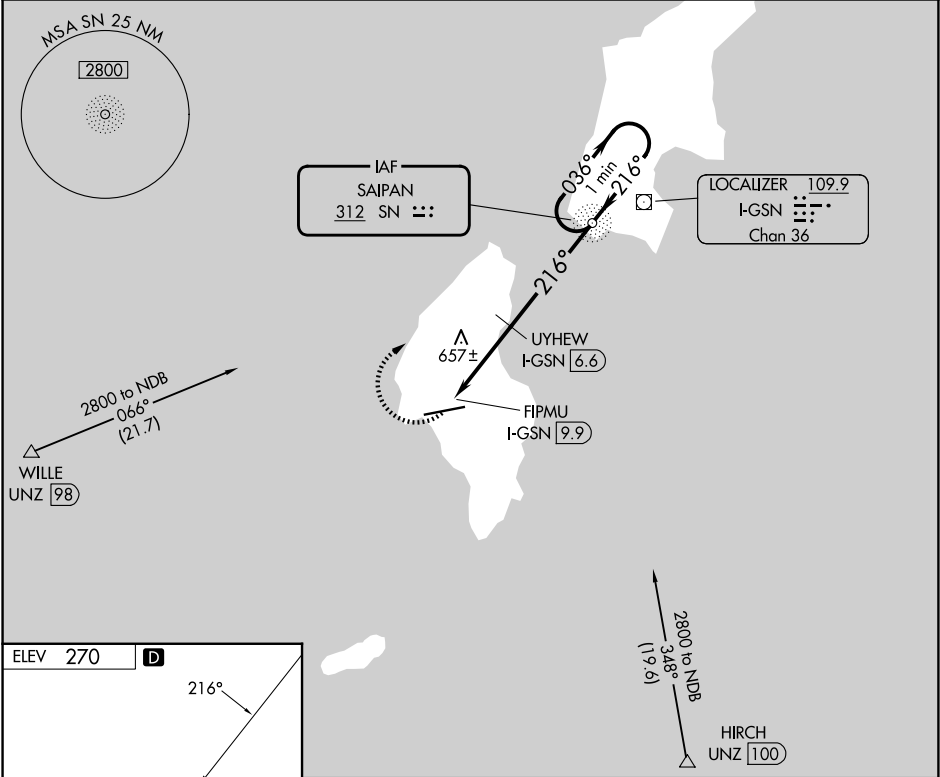
SN NDB 312	APP CRS 216°	Rwy Ldg TDZE Apt Elev	N/A N/A 270
----------------------	------------------------	-----------------------------	--------------------------





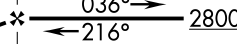
FRANCISCO MANGLONA BORJA/TINIAN INTL (TNI)(PGWT)

NDB-A

NA	Obtain local altimeter setting on CTAF; when not received, use Saipan altimeter setting and increase all MDA 40 feet, and all Cats visibility ¼ SM. Increase UYHEW fix minimums Cats C and D visibility ¼ mile. # DME from I-GSN LOC/DME.	MISSED APPROACH: Climbing right turn to 2800 direct SN NDB and hold.
----	---	--

GUAM CERAP 118.4 290.5	SAIPAN RADIO 123.6 (CTAF) 0
----------------------------------	---------------------------------------



2800	SN	SN NDB	One Minute Holding Pattern	
				
				
FIPMU I-GSN 9.9		UYHEW I-GSN 6.6	216° 216° 036° 2800	
1060*		1060*	*1100 when using Saipan altimeter setting.	
3.3 NM		4.7 NM		
CATEGORY	A	B	C	D
CIRCLING	1060-1	790 (800-1)	1060-2¼ 790 (800-2¼)	1060-2½ 790 (800-2½)
# UYHEW FIX MINIMUMS				
CIRCLING	1000-1	730 (800-1)	1000-2 730 (800-2)	1060-2½ 790 (800-2½)