

WAAS

CH **87108**

W18A

APP CRS

181°

Rwy Idg

5001

TDZE

684

Apt Elev

685

RNAV (GPS) RWY 18

STARKE COUNTY (OXI)

RNP APCH - GPS.

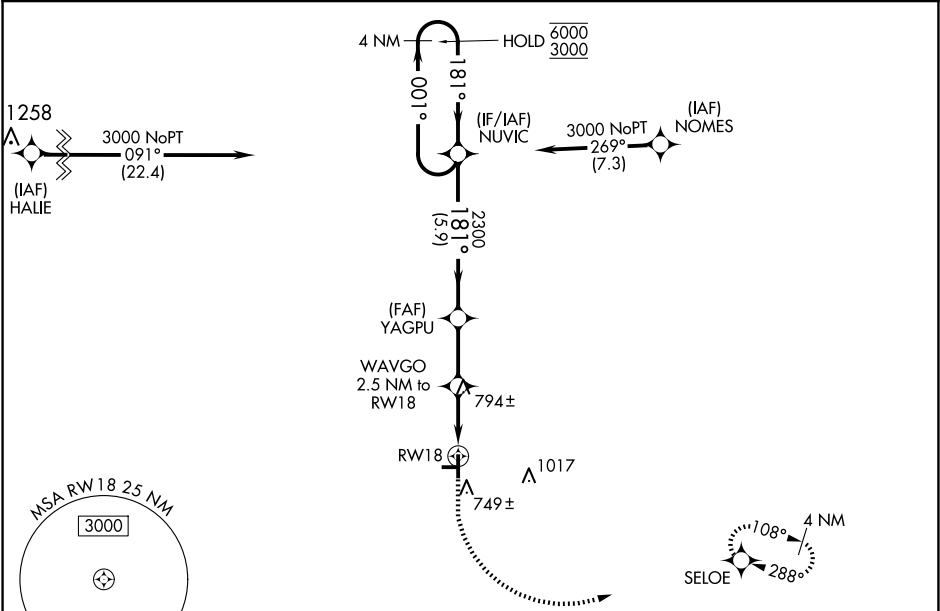
▼

▲

Baro-VNAV and VDP NA when using SBN altimeter setting. For uncompensated Baro-VNAV systems, LNAV/VNAV NA below -16°C or above 54°C. Circling NA to Rwys 9 and 27. When local altimeter setting not received, use SBN altimeter setting: increase LPV DA to 1010 feet; increase LNAV/VNAV DA to 1136 feet and all visibilities ¾ SM; increase all MDAs 80 feet and LNAV visibility Cat C and D ¾ SM, and Circling visibility Cat C and D ¼ SM.

MISSED APPROACH:
Climb to 1200 then climbing left turn to 3000 direct SELOE and hold.

AWOS-3 135.775	SOUTH BEND APP CON ★ 132.05 257.8	UNICOM 122.8 (CTAF) 0
--------------------------	---	---------------------------------



ELEV 685

TDZE 684

4 NM Holding Pattern

VGSI and RNAV glidepath not coincident (VGSI Angle 3.00/TCH 27).

1200

3000

SELOE

6000

3000

001°

181°

181°

2300

1520

1.1 NM to RW18

1.4 NM

2.5 NM

5.9 NM

GP 3.00°

TCH 40

CATEGORY	A	B	C	D
LPV DA		934-1	250 (300-1)	
LNAV/VNAV DA		1060-1	376 (400-1)	
LNAV MDA		1060-1	376 (400-1)	
CIRCLING	1120-1 435 (500-1)	1140-1 455 (500-1)	1380-2 695 (700-2)	1380-2 ¼ 695 (700-2 ¼)

MIRL Rwy 18-36

REIL Rwys 18 and 36 0