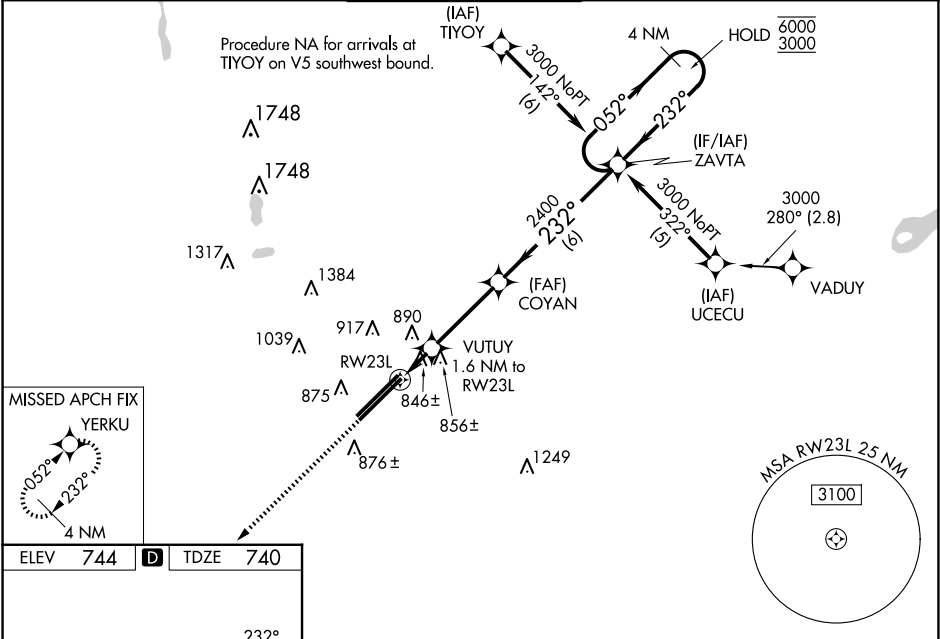


WAAS CH 62811 W23A	APP CRS 232°	Rwy Ldg 12103 TDZE 740 Apt Elev 744
--	------------------------	--

RNAV (GPS) RWY 23L
RICKENBACKER INTL (LCK)

RNP APCH - GPS. <div><div><div></div><div></div></div><div><div></div><div></div></div></div> <div>For uncompensated Baro-VNAV systems, LNAV/VNAV NA below -16°C or above 54°C. Circling NA northwest of Rwy 5L-23R. Baro-VNAV NA when using John Glenn Columbus Intl altimeter setting. When local altimeter setting not received, use John Glenn Columbus Intl altimeter setting: increase LPV DA to 975 feet; increase LNAV/VNAV DA to 1157 feet and all visibilities to RVR 4000; increase all MDAs 40 feet and LNAV visibility Cats C/D to RVR 5000 and Circling Cat D to 2¼ SM. * RVR 1800 authorized with use of FD or AP or HUD to DA, (NA when using John Glenn Columbus Intl altimeter setting).</div>		MALSR <div><div></div><div></div></div>	MISSED APPROACH: Climb to 3000 direct YERKU and hold.
---	--	--	--

ATIS 132.75	COLUMBUS APP CON 134.0 279.6	RICK TOWER 120.05 348.4	GND CON 125.275 275.8	CLNC DEL 125.275 275.8
-----------------------	--	-----------------------------------	---------------------------------	----------------------------------



3000

↑

YERKU

✦

VGSI and RNAV glidepath not coincident (VGSI Angle 3.00/TCH 78).

COYAN

2400

VUTUY

1.6 NM to RW23L

RW23L

1280

2400

6 NM

3.4 NM

1.6

4 NM Holding Pattern

052° → 6000

← 232° 3000

GP 3.00° TCH 55

ZAVTA

232°

CATEGORY	A		B		C	D
LPV DA *	940/24		200 (200-½)			
LNAV/VNAV DA	1122/35		382 (400-¾)			
LNAV MDA	1180/24 440 (500-½)		1180/40		440 (500-¾)	
CIRCLING	1240-1 496 (500-1)		1280-1½ 536 (600-1½)		1400-2 656 (700-2)	

TDZ/CL Rwy 5R

REIL Rwy 23R

HIRL Rwy 5L-23R and 5R-23L