

LOC I-LCK <b><u>110.1</u></b>	APP CRS <b>232°</b>	Rwy Idg TDZE Apt Elev	23L <b>12103</b> <b>740</b> <b>744</b>	23R <b>10913</b> <b>743</b> <b>744</b>
----------------------------------	------------------------	-----------------------------	---	---

ILS or LOC RWY 23L  
RICKENBACKER INTL (LCK)

**A** Circling NA northwest of Rwy 5L-23R. When local altimeter setting not received, use John Glenn Columbus Intl altimeter setting: increase DA to 975 feet; increase all MDAs 40 feet and S-LOC 23L visibility Cat C/D to RVR 5500 and Circling visibility Cat D to 2¼ SM. Autopilot coupled approach NA below 1000 MSL.

MALSR



**MISSED APPROACH:** Climb to 3000, then left turn direct XUB VOR and hold.

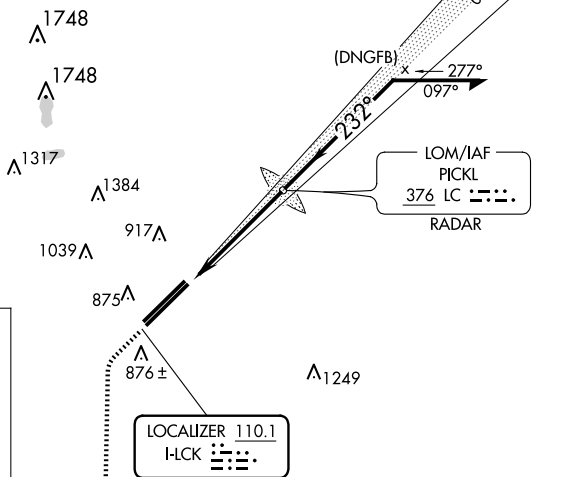
ATIS 132.75	COLUMBUS APP CON 134.0 279.6	RICK TOWER 120.05 348.4	GND CON 125.275 275.8	CLNC DEL 125.275 275.8
----------------	---------------------------------	----------------------------	--------------------------	---------------------------

ALTERNATE MISSED  
APCH FIX

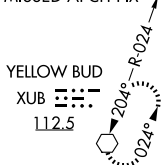


PICKL  
LC 

## RADAR REQUIRED

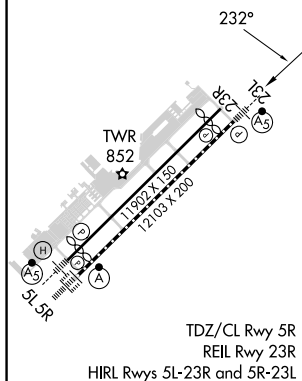


MISSED APCH FIX



YELLOW BUD  
XUB ䷔  
112.5

ELEV	744	<b>D</b>	TDZE 23L 740
			TDZE 23R 743



TDZ/CL Rwy 5R  
REIL Rwy 23R  
23R and 5R-23L

FAF to MAP 4.9 NM

Knots	60	90	120	150	180
Min:Sec	4:54	3:16	2:27	1:58	1:38