

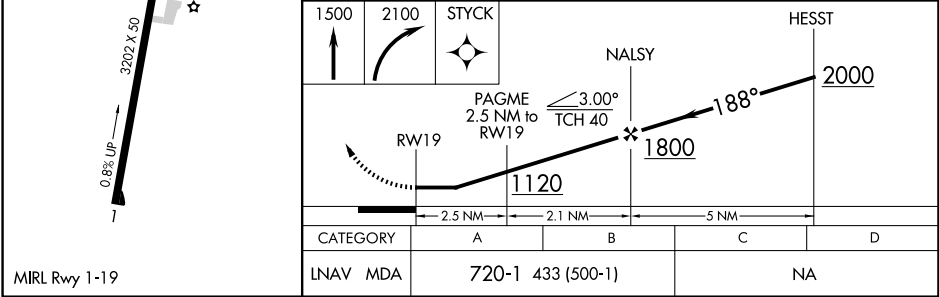
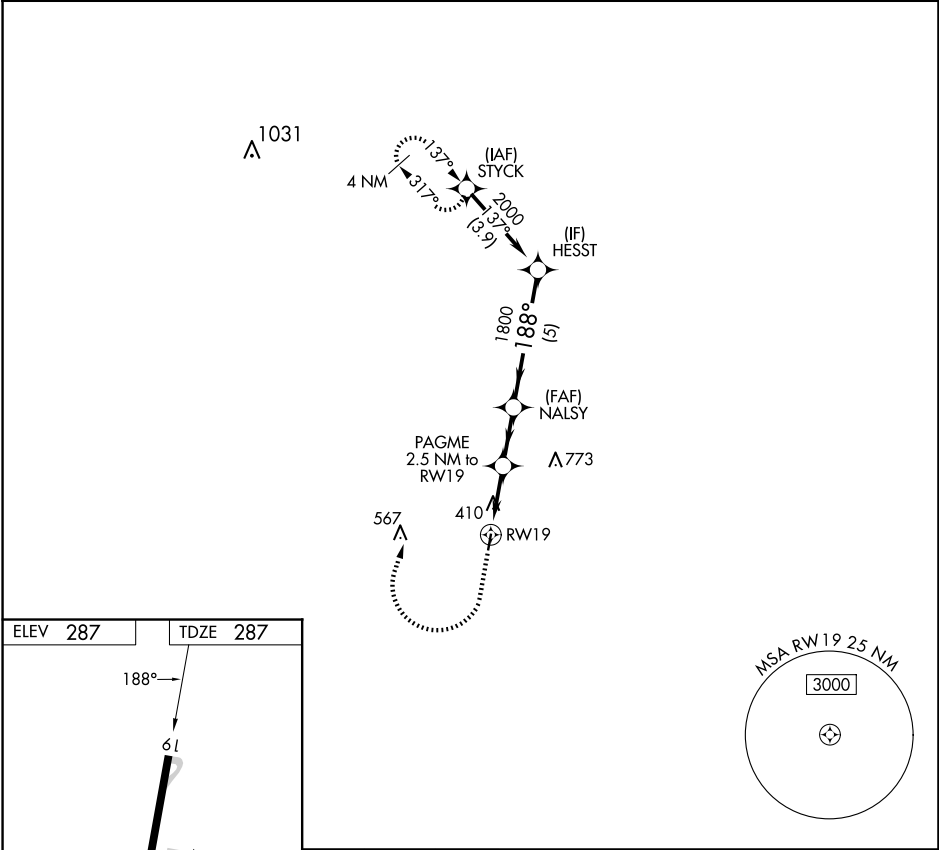
APP CRS	Rwy Idg	3202
188°	TDZE	287
	Apt Elev	287

RNAV (GPS) RWY 19

MADISONVILLE MUNI (51R)

RNP APCH - GPS.	MISSED APPROACH: Climb to 1500 then climbing right turn to 2100 direct STYCK and hold.
Procedure NA at night. Rwy 19 helicopter visibility reduction below 1 SM NA. Use UTS altimeter setting.	

UTS ASOS 119.425	HOUSTON CENTER 134.8 269.6	CTAF 122.9
---------------------	-------------------------------	---------------



SC-5, 07 AUG 2025 to 04 SEP 2025

SC-5, 07 AUG 2025 to 04 SEP 2025