

VOR/DME GEE
108.2
Chan **19**

APP CRS
323°

Rwy Idg
TDZE
Apt Elev
N/A
N/A
780

VOR-A
LE ROY (5G0)

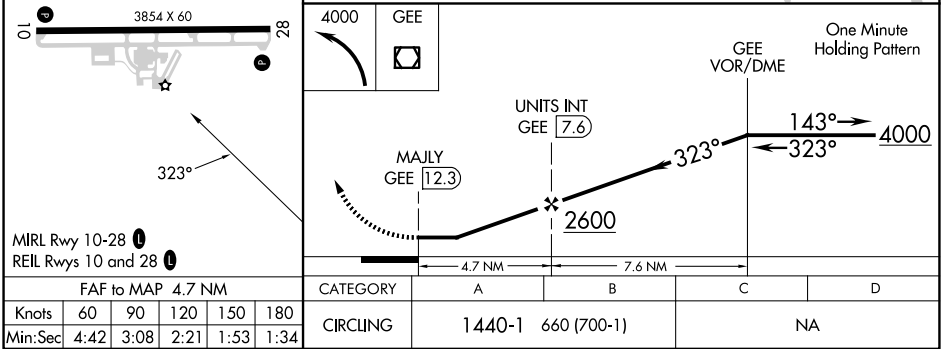
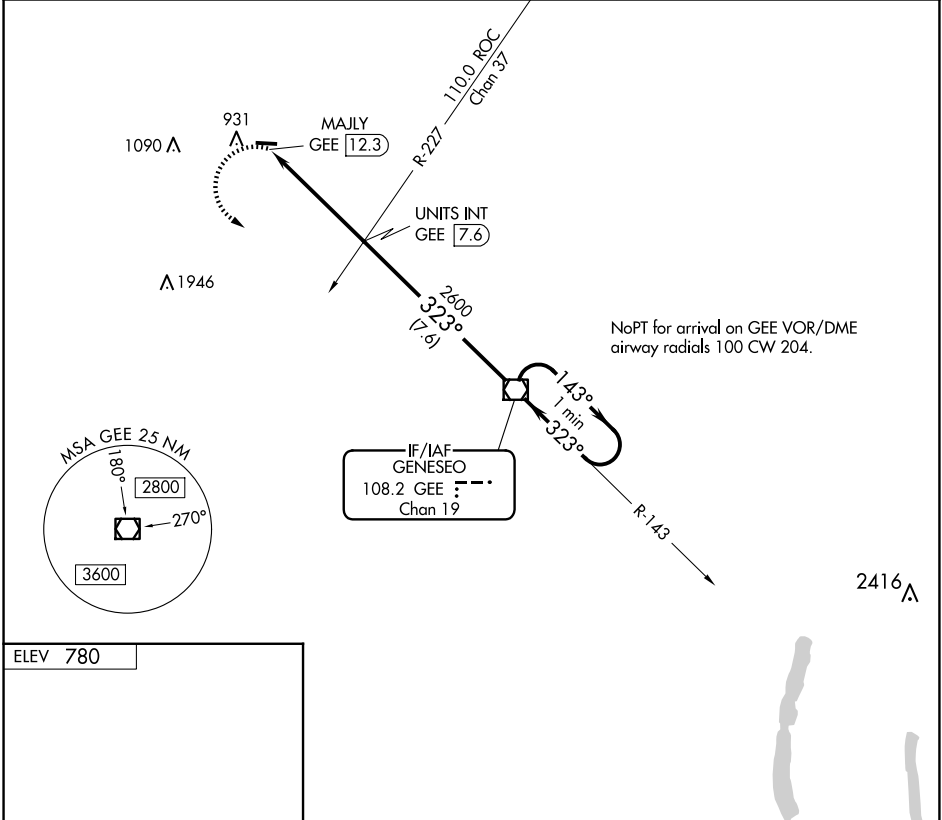
⚠

NA

Use Frederick Douglass/Greater Rochester Intl altimeter setting. Circling Rwy 10 NA at night. When Circling to Rwy 28 at night, operational VGSI required, remain on or above VGSI glidepath until threshold.

MISSED APPROACH: Climbing left turn to 4000 direct GEE VOR/DME and hold.

ROC ASOS 124,825	ROCHESTER APP CON 123.7 322.3	UNICOM 122.8 (CTAF) 1
----------------------------	---	--



NE-2, 07 AUG 2025 to 04 SEP 2025

NE-2, 07 AUG 2025 to 04 SEP 2025