

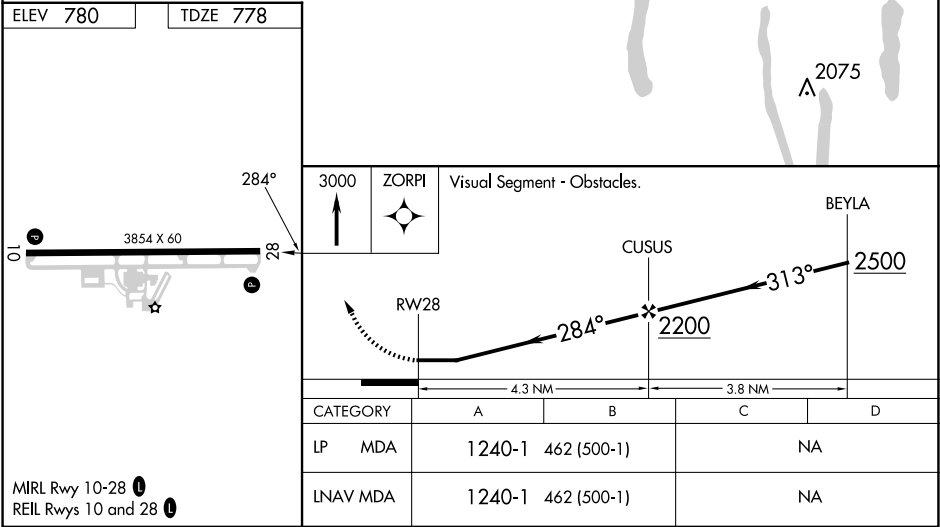
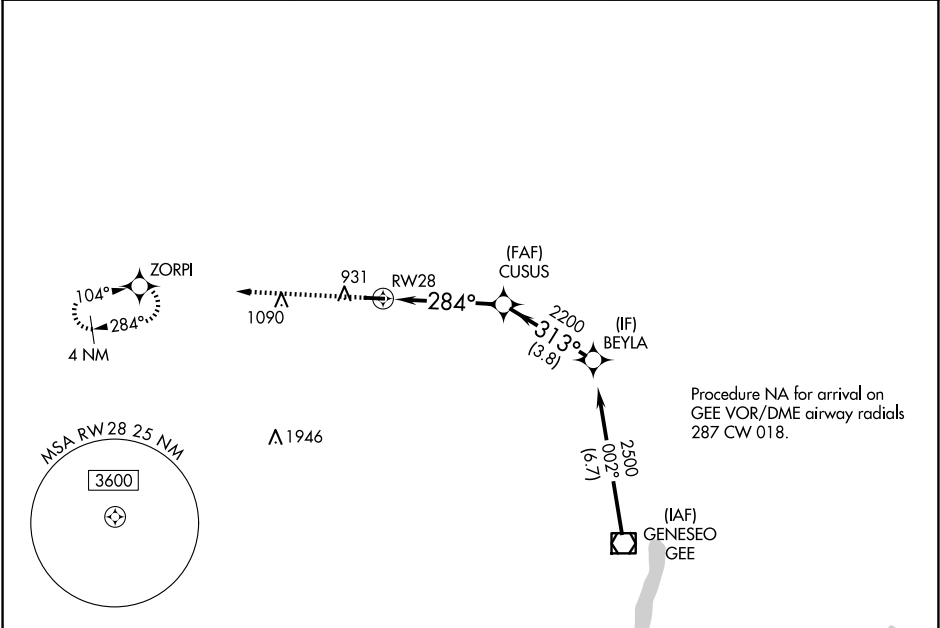
WAAS CH <b>69330</b> <b>W28A</b>	APP CRS <b>284°</b>	Rwy Idg TDZE <b>778</b> Apt Elev <b>780</b>	<b>3854</b> <b>778</b> <b>780</b>
--	------------------------	---	---

RNAV (GPS) RWY 28

LE ROY (5G0)

RNP APCH.	MISSED APPROACH: Climb to 3000 direct ZORPI and hold.
<div><div>Procedure NA at night. Rwy 28 helicopter visibility reduction below 1 SM NA.</div><div>NA Use Frederick Douglass/Greater Rochester Intl altimeter setting.</div></div>	

ROC ASOS <b>124.825</b>	ROCHESTER APP CON <b>123.7 322.3</b>	UNICOM <b>122.8 (CTAF) 0</b>
----------------------------	---	---------------------------------



NE-2, 07 AUG 2025 to 04 SEP 2025

NE-2, 07 AUG 2025 to 04 SEP 2025