

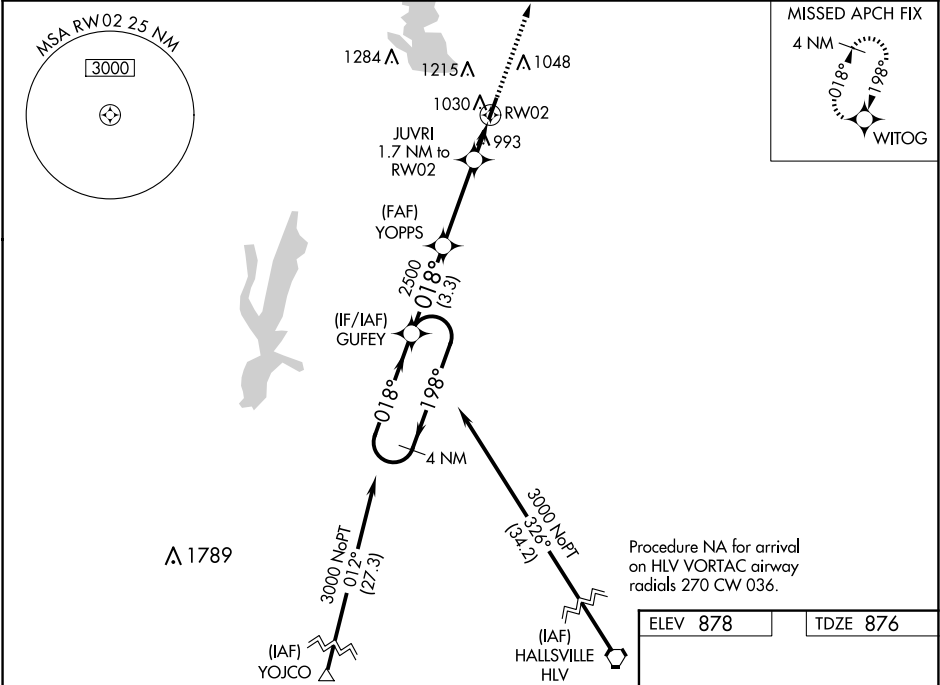
WAAS CH <b>65933</b> <b>W02A</b>	APP CRS <b>018°</b>	Rwy Ldg TDZE Apt Elev	<b>3554</b> <b>876</b> <b>878</b>
--	------------------------	-----------------------------	---

RNAV (GPS) RWY 2  
MACON-FOWER MEML (K89)

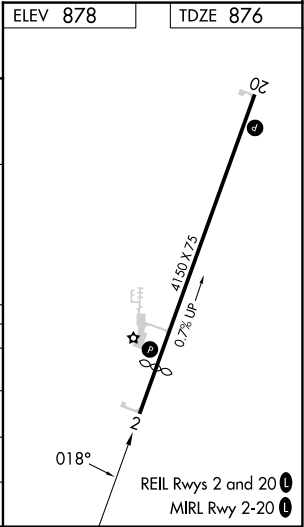
**NA** DME/DME RNP-0.3 NA. Use Moberly altimeter setting; when not received use Columbia altimeter setting and increase all DA 91 feet and all MDA 100 feet and increase LPV all Cats and LNAV/VNAV all Cats visibility ¼ mile. Helicopter visibility reduction below ¾ SM NA. Night Landing: Rwy 20 NA. Baro-VNAV NA.

MISSED APPROACH: Climb to 2700 direct WITOG and hold.

MBY AWOS-3PT <b>120.025</b>	KANSAS CITY CENTER <b>125.25 235.975</b>	UNICOM <b>122.8 (CTAF) 0</b>
--------------------------------	---	---------------------------------



4 NM Holding Pattern		VGSI and RNAV glidepath not coincident (VGSI Angle 3.00/TCH 31).		2700	WITOG
3000 ← 198° 018° →		GUFY	YOPPS	JUVRI 1.7 NM to RWY 2	RWY 2
GP 3.00° TCH 40		2500	2500	*1460	
		3.3 NM	3.3 NM	1.7 NM	
CATEGORY	A	B	C	D	
LPV DA	1165-1	289 (300-1)		NA	
LNAV/VNAV DA	1309-1½	433 (500-1½)		NA	
LNAV MDA	1320-1	444 (500-1)		NA	
CIRCLING	1400-1 522 (600-1)	1560-1 682 (700-1)		NA	



NC-3, 07 AUG 2025 to 04 SEP 2025

NC-3, 07 AUG 2025 to 04 SEP 2025