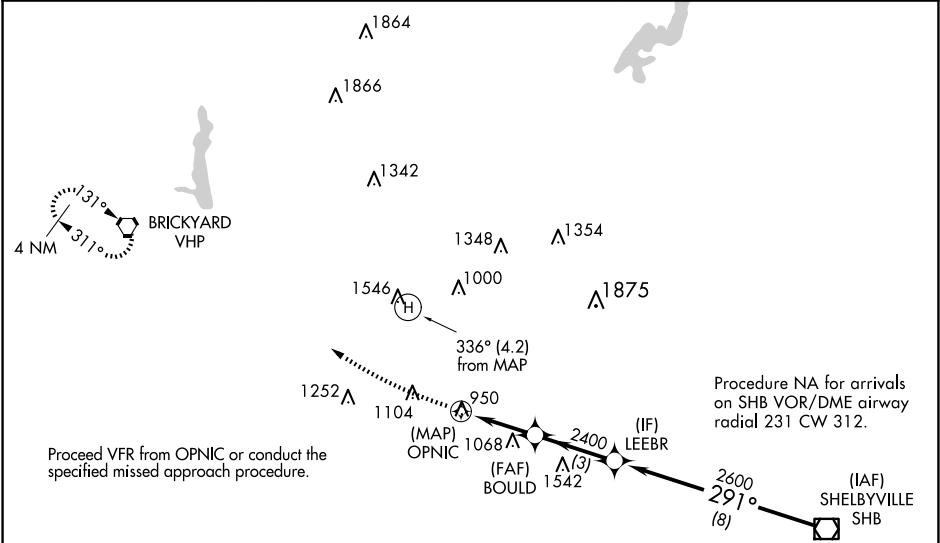


APP CRS 291°	Rwy Idg Sfc Elev Apt Elev	N/A 824 732
COPTER RNAV (GPS) 291° INDIANAPOLIS DOWNTOWN (8A4)		

RNP APCH - GPS	MISSED APPROACH: Climb to 1500 then climbing right turn to 3000 direct VHP VORTAC and hold.
NA Limit final and missed approach to 70 KIAS. When local altimeter setting not received, use Indianapolis Intl altimeter setting and increase MDA 40 feet. Activate High Intensity Pad Lights-CTAF.	

AWOS-3 135.525	INDIANAPOLIS APP CON 125.275 317.8	UNICOM 123.05 (CTAF) 0
-------------------	---------------------------------------	---------------------------



CAUTION: Heliport located in area of numerous lighted and unlighted obstructions.

