

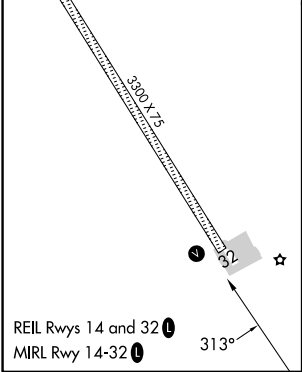
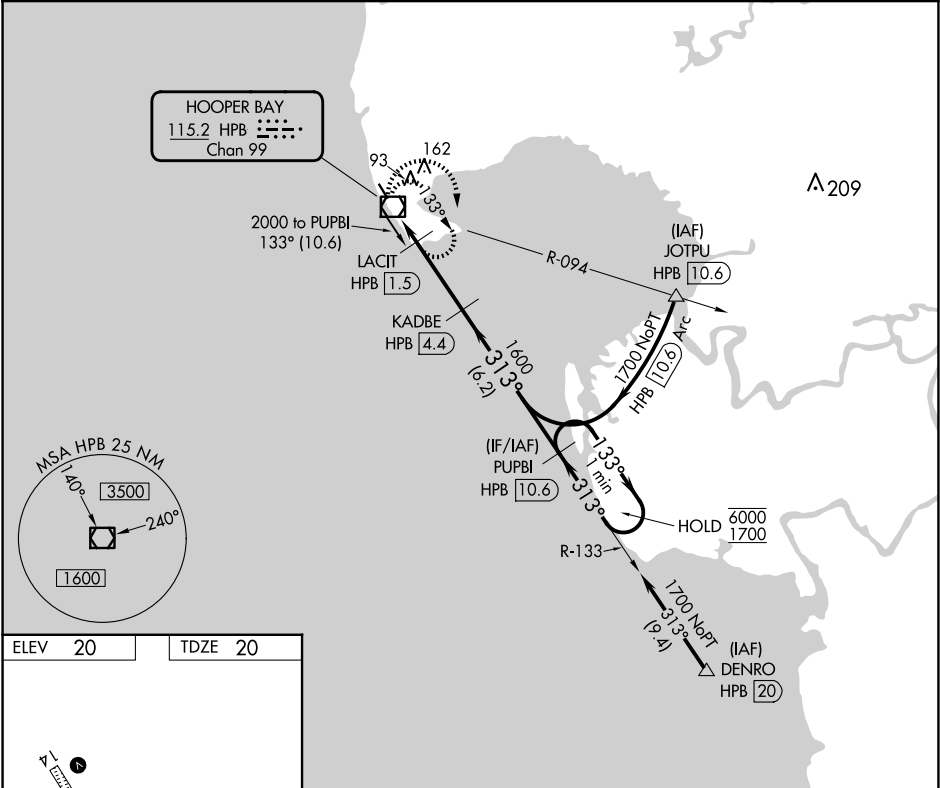
VOR/DME HPB	APP CRS	Rwy Idg	3300
115.2	313°	TDZE	20
Chan 99		Apt Elev	20

VOR RWY 32

HOOPER BAY (HPB) (PAHP)

DME required.	MISSED APPROACH: Climbing right turn to 2000 in HPB VOR/DME holding pattern.
<div><div>▼</div><div>Rwy 32 helicopter visibility reduction below 1 SM NA.</div></div> <div><div>⚠</div><div>Straight-in Rwy 32 NA at night, Circling Rwy 32 NA at night.</div></div>	

AWOS-3P 135.1	ANCHORAGE CENTER 124.5	KENAI RADIO 122.4	CTAF 123.0
------------------	---------------------------	----------------------	---------------



2000 HPB	VGSI and descent angles not coincident (VGSI Angle 3.00/TCH 28).			
	LACIT HPB 1.5	KADBE HPB 4.4	PUPBI HPB 10.6	One Minute Holding Pattern
	HPB VOR/DME	313°	1600	6000 1700
	0.4	1.5 NM	2.9 NM	6.2 NM
CATEGORY	A	B	C	D
S-32	420-1	400 (400-1)	420-1½	400 (400-1½)
CIRCLING	420-1	480-1	480-1½	580-2
	400 (400-1)	460 (500-1)	460 (500-1½)	560 (600-2)

AK, 07 AUG 2025 to 02 OCT 2025

AK, 07 AUG 2025 to 02 OCT 2025