

WAAS

CH **65725**

W32A

APP CRS

321°

Rwy Idg

3300

TDZE

20

Apt Elev

20

RNAV (GPS) RWY 32

HOOPER BAY (HPB) (PAHP)

RNP APCH - GPS.

▼

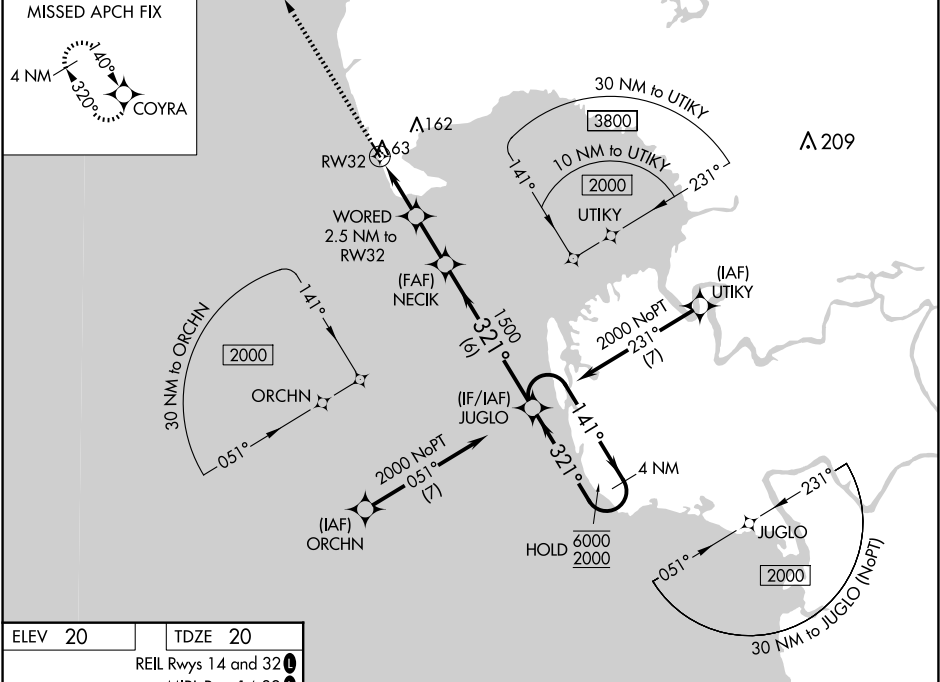
Rwy 32 helicopter visibility reduction below 1 SM NA. For uncompensated Baro-VNAV systems, LNAV/VNAV NA below -19°C or above 54°C.

⚠

Straight-in Rwy 32 NA at night, Circling Rwy 32 NA at night.

MISSED APPROACH: Climb to 2000 direct COYRA and hold.

AWOS-3P 135.1	ANCHORAGE CENTER 124.5	KENAI RADIO 122.4	CTAF 123.0
-------------------------	----------------------------------	-----------------------------	----------------------



ELEV 20

TDZE 20

REIL Rwy 14 and 32

MIRL Rwy 14-32

2000

COYRA

VGSI and RNAV glidepath not coincident (VGSI Angle 3.00/TCH 28).

JUGLO

4 NM Holding Pattern

141°

6000

321°

2000

GP 3.00°

TCH 45

WORED 2.5 NM to RW32

NECK 1500

840

1500

2.5 NM

2 NM

6 NM

RW32

CATEGORY	A	B	C	D
LPV DA		270-1	250 (300-1)	
LNAV/VNAV DA		270-1	250 (300-1)	
LNAV MDA		320-1	300 (300-1)	
CIRCLING	400-1 380 (400-1)	480-1 460 (500-1)	480-1½ 460 (500-1½)	580-2 560 (600-2)