

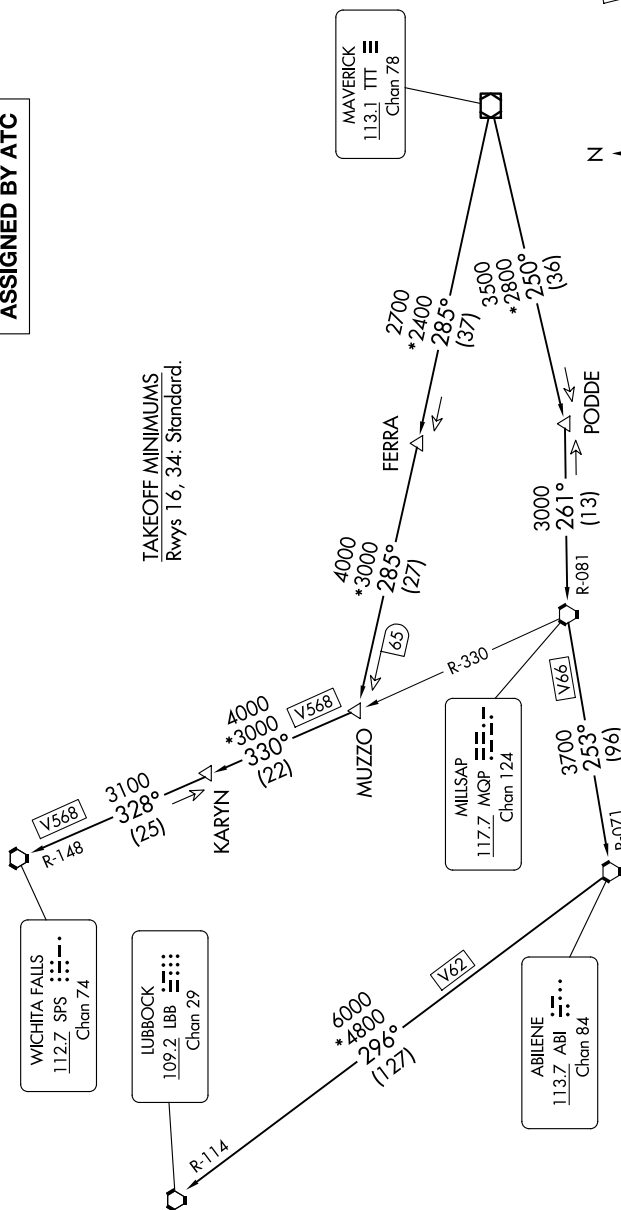
## KINGDOM FIVE DEPARTURE

LONE STAR DEP CON  
125.2 343.65  
CTAF  
122.9

**TOP ALTITUDE:  
ASSIGNED BY ATC**

RADAR and DME required.

TAKEOFF MINIMUMS  
Rwys 16, 34: Standard.



NOTE: LUBBOCK Transition: For all aircraft overflying the MQP VORTAC westbound or direct.  
NOTE: MILLSAP Transition: For all aircraft overflying the MQP VORTAC westbound or direct.  
NOTE: PODDE Transition: ATC assigned.  
NOTE: WICHITA FALLS Transition: For all aircraft landing within the Wichita Falls terminal area or overflying the SPS VORTAC.  
NOTE: For all aircraft requesting 17000 and below.

NOTE: Chart not to scale.

(CONTINUED ON FOLLOWING PAGE)

## KINGDOM FIVE DEPARTURE

(KING5.TTT) 17APR25

ENNIS, TEXAS

ENNIS MUNI (F41)