

WAAS CH 86503 W09A	APP CRS 090°	Rwy Ldg TDZE 16 Apt Elev 17	6500
--	------------------------	---	-------------

RNAV (GPS) RWY 9

GULF SHORES INTL/JACK EDWARDS FLD (JKA)

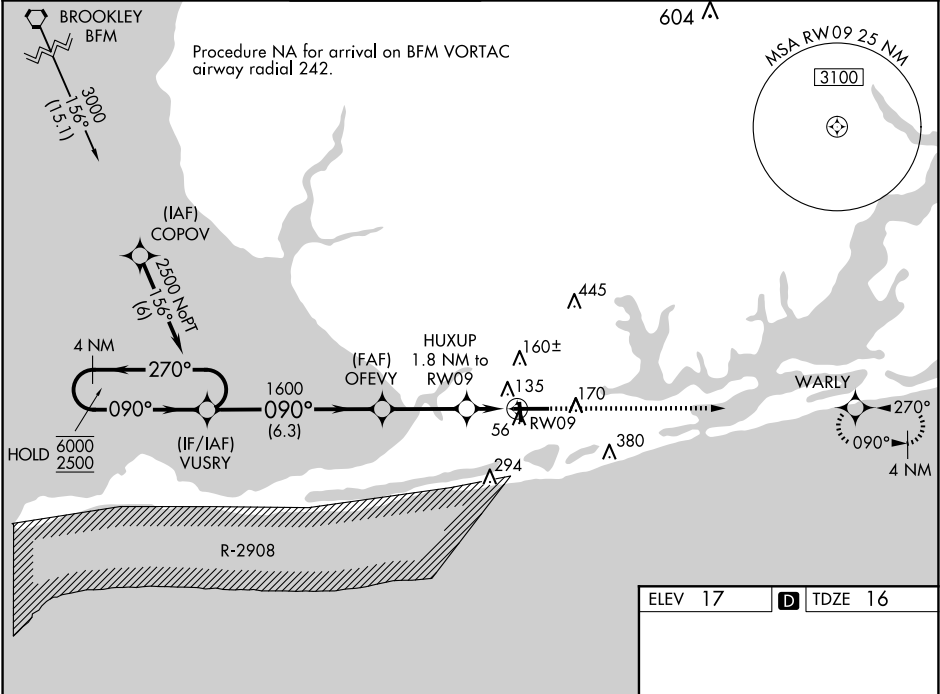
RNP APCH - GPS.

▼

Baro-VNAV and VDP NA when using Pensacola Intl altimeter setting. Rwy 09 helicopter visibility reduction below ¾ SM NA. Circling Rwy 17, 35 NA at night. For uncompensated Baro-VNAV systems, LNAV/VNAV NA below -15°C or above 54°C. When local altimeter setting not received, use Pensacola Intl altimeter setting and increase LPV DA to 388 feet and all visibilities ½ SM. Increase LNAV/VNAV DA to 394 feet and all visibilities ½ SM. Increase all MDAs 80 feet and LNAV visibility Cat C/D ¼ SM, and Circling visibility Cat C/D ¼ SM.

MISSED APPROACH:
Climb to 2500 direct
WARLY and hold.

ATIS 134.525	PENSACOLA APP CON 120.65 270.8	GULF SHORES TOWER ★ 118.65 (CTAF) 0	CLNC DEL 121.7	CLNC DEL 124.55 (When twr clsd)	GND CON 121.7	UNICOM 122.7
------------------------	--	--	--------------------------	---	-------------------------	------------------------



4 NM Holding Pattern

6000
2500

←270°→

090°

GP 3.00°
TCH 50

VUSRY

OFEVY

HUXUP

1.8 NM to RWY 09

1.1 NM to RWY 09

RWY 09

2500

WARLY

6.3 NM

3 NM

0.8

1.1

CATEGORY	A	B	C	D
LPV DA		310-7/8	294 (300-7/8)	
LNAV/VNAV DA		316-7/8	300 (300-7/8)	
LNAV MDA	400-1	384 (400-1)	400-1 1/8	384 (400-1 1/8)
CLIRCLING	480-1	463 (500-1)	740-2 723 (800-2)	740-2 1/4 723 (800-2 1/4)

ELEV 17

TDZE 16

090°

6962 X 100

3595 X 750

35

TWR

MRL Rwy 17-35

HIRL Rwy 9-27