

LOC/DME I-JKA	APP CRS	Rwy Ldg	6500
110.7	270°	TDZE	17
Chan 44		Apt Elev	17

ILS or LOC RWY 27

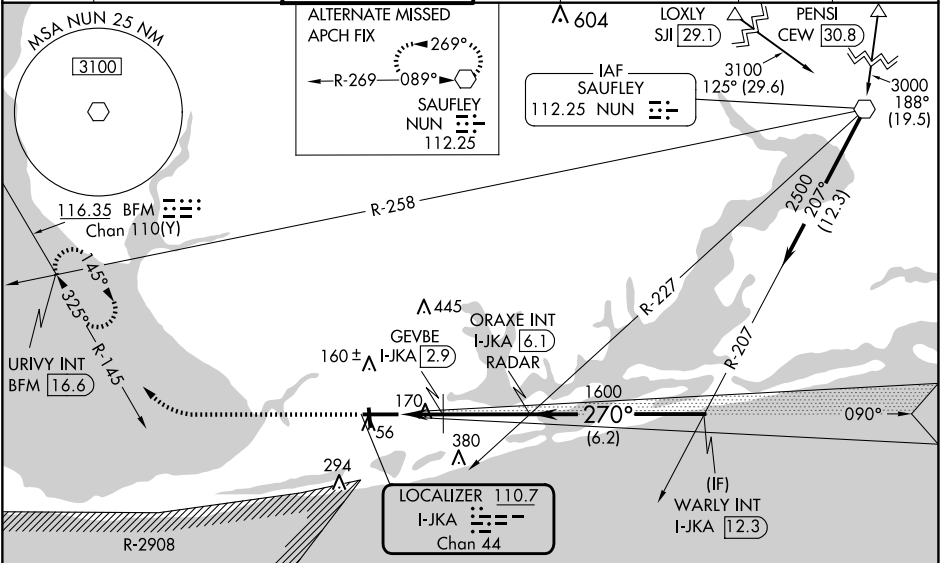
GULF SHORES INTL/JACK EDWARDS FLD (JKA)

⚠ Circling Rwy 17, 35 NA at night. VDP NA with Pensacola Intl altimeter setting. When local altimeter setting not received, use Pensacola Intl altimeter setting and increase DA to 295 feet; increase all MDAs 80 feet; increase S-LOC 27 visibility Cats C and D ¾ SM; increase S-LOC 27 GEVBE FIX minimums visibility Cats C and D visibility ¼ SM; increase all Circling visibility Cat C and D ¼ SM. GEVBE FIX MINIMUMS: For inop ALS, increase S-LOC 27 visibility Cats C and D to 1½ SM. PENSACOLA INTL ALTIMETER SETTING MINIMUMS: For inop ALS, increase S-ILS 27 visibility all Cats to ¾, increase S-LOC 27 visibility Cats C and D to 1¾ SM; increase GEVBE FIX minimums S-LOC 27 visibility Cats C and D to 1¾ SM.

MALSR

MISSED APPROACH:
Climb to 2000 on heading 270° and BFM VORTAC R-145 to URIVY INT/BFM 12.6 DME and hold.

ATIS 134.525	PENSACOLA APP CON 120.65 270.8	GULF SHORES TOWER ★ 118.65 (CTAF) 0	CLNC DEL 121.7	CLNC DEL 124.55 (When twr clsd)	GND CON 121.7	UNICOM 122.7
-----------------	-----------------------------------	--	-------------------	---------------------------------------	------------------	-----------------



ELEV 17	D	TDZE 17	2000	BFM R-145	URIVY INT	**620 when using Pensacola Intl altimeter setting.
			hdg 270°			
			*LOC only.			
			I-JKA 1.3	*I-JKA 2.4	GEVBE I-JKA 2.9	ORAXE INT I-JKA 6.1
			1.1 NM	0.5	3.2 NM	6.2 NM
			270°			
			2500			
			1600			
			GS 3.00° TCH 47			
			CATEGORY			
			A			
			B			
			C			
			D			
			S-ILS 27			
			217-½			
			200 (200-½)			
			S-LOC 27			
			540-½			
			523 (600-½)			
			540-1			
			523 (600-1)			
			CIRCLING			
			540-1			
			523 (600-1)			
			740-2			
			723 (800-2)			
			740-2¼			
			723 (800-2¼)			
			GEVBE FIX MINIMUMS			
			S-LOC 27			
			420-½			
			403 (500-½)			
			420-¾			
			403 (500-¾)			
			CIRCLING			
			480-1			
			463 (500-1)			
			740-2			
			723 (800-2)			
			740-2¼			
			723 (800-2¼)			

MIRL Rwy 17-35 0

HIRL Rwy 9-27 0

FAF to MAP 4.8 NM

Knots	60	90	120	150	180
Min:Sec	4:48	3:12	2:24	1:55	1:36