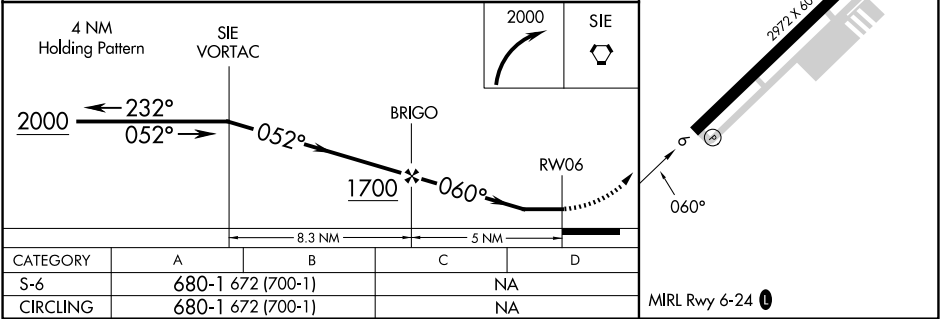
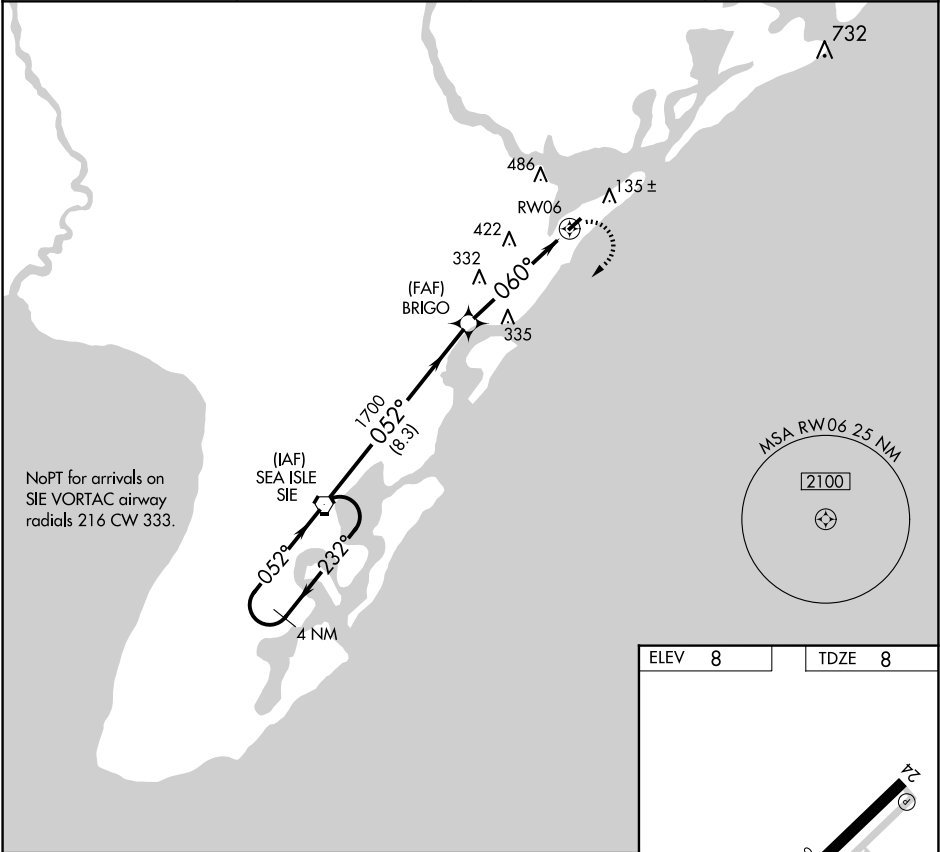


APP CRS 060°	Rwy Ldg TDZE Apt Elev 8 8	2972	GPS RWY 6 OCEAN CITY MUNI (26N)
-----------------	---------------------------------------	------	------------------------------------

▲ NA	When local altimeter setting not received, use Atlantic City altimeter setting.	MISSED APPROACH: Climbing right turn to 2000 direct SIE VORTAC and hold.
------	--	---

AWOS-AV 119.775	ATLANTIC CITY APP CON 124.6 327.125	CLNC DEL 133.6	UNICOM 122.7 (CTAF) 0
--------------------	--	-------------------	--------------------------



NE-2, 07 AUG 2025 to 04 SEP 2025

NE-2, 07 AUG 2025 to 04 SEP 2025