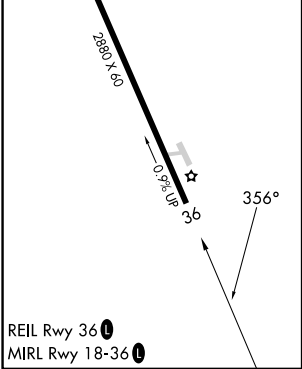
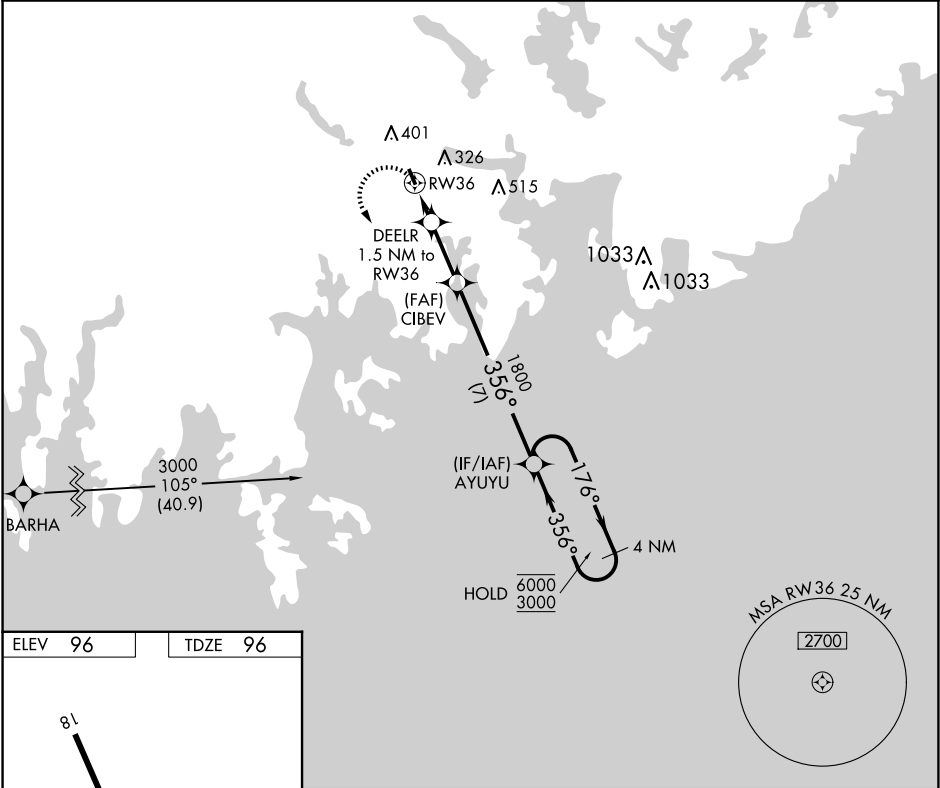


APP CRS 356°	Rwy Idg	2880
	TDZE	96
	Apt Elev	96

RNAV (GPS) RWY 36
MACHIAS VALLEY(MVM)

RNP APCH - GPS.		MISSED APPROACH: Climbing left turn to 3000 direct AYUYU and hold, continue climb-in-hold to 3000.
▼ NA	For uncompensated Baro-VNAV systems, LNAV/VNAV NA below -15°C or above 54°C. Helicopter visibility reduction below 1 SM NA. Procedure NA at night. Baro-VNAV NA when using BHB altimeter setting. When local altimeter setting not received, use BHB altimeter setting and increase LNAV/VNAV DA to 774 feet and all visibilities 1/8 SM. Increase all MDAs 100 feet.	

AWOS-AV 122.8	BOSTON CENTER 124.25 290.5	UNICOM 122.8 (CTAF)
-------------------------	--------------------------------------	-------------------------------



3000 AYUYU		AYUYU 4 NM Holding Pattern	
DEELR 1.5 NM to RW36		CIBEV 1800	
RW36		356°	
1.5 NM		7 NM	
CATEGORY		A	
LNAV/VNAV DA		678-13/4 582 (600-13/4)	
LNAV MDA		580-1 484 (500-1)	
CIRCLING		700-1 604 (700-1)	