

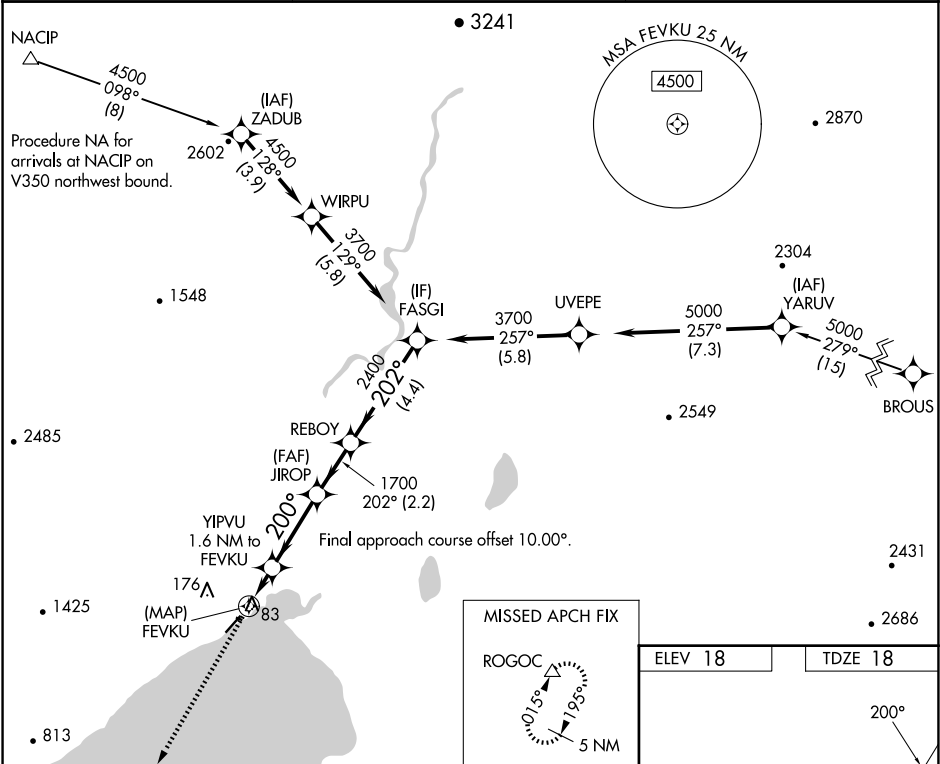
WAAS CH <b>72841</b> <b>W21A</b>	APP CRS <b>200°</b>	Rwy Idg TDZE Apt Elev	<b>4400</b> <b>18</b> <b>18</b>
--	------------------------	-----------------------------	---------------------------------------

RNAV (GPS) RWY 21

TOGIAK (TOG)(PATG)

<div><div>⚠</div><div>⚠</div></div> <div>Circling NA northwest of Rwy 3-21. Rwy 21 helicopter visibility reduction below 1 SM NA. DME/DME RNP-0.3 NA. Procedure NA at night.</div>	MISSED APPROACH: Climb to 4400 direct ROGOC and hold, continue climb-in-hold to 4400.
--	---

AWOS-3P <b>119.3</b>	ANCHORAGE CENTER <b>132.75 282.35</b>	CTAF <b>122.5 0</b>
-------------------------	--	------------------------



<div>4400 ↑ ROGOC △</div>	VGSI and descent angles not coincident (VGSI Angle 3.00/TCH 31).			
	FEVKU	YIPVU 1.6 NM to FEVKU	JIROP	REBOY
	720	200°	1700	202°
	3.00° TCH 40		2400	3700
	0.5	1.6 NM	3.1 NM	2.2 NM
	4.4 NM			
CATEGORY	A	B	C	D
LP MDA	340-1 322 (400-1)			
LNNAV MDA	340-1 322 (400-1)			
<div>CIRCLING</div>	400-1 382 (400-1)	480-1 462 (500-1)	480-1½ 462 (500-1½)	800-2½ 782 (800-2½)

