

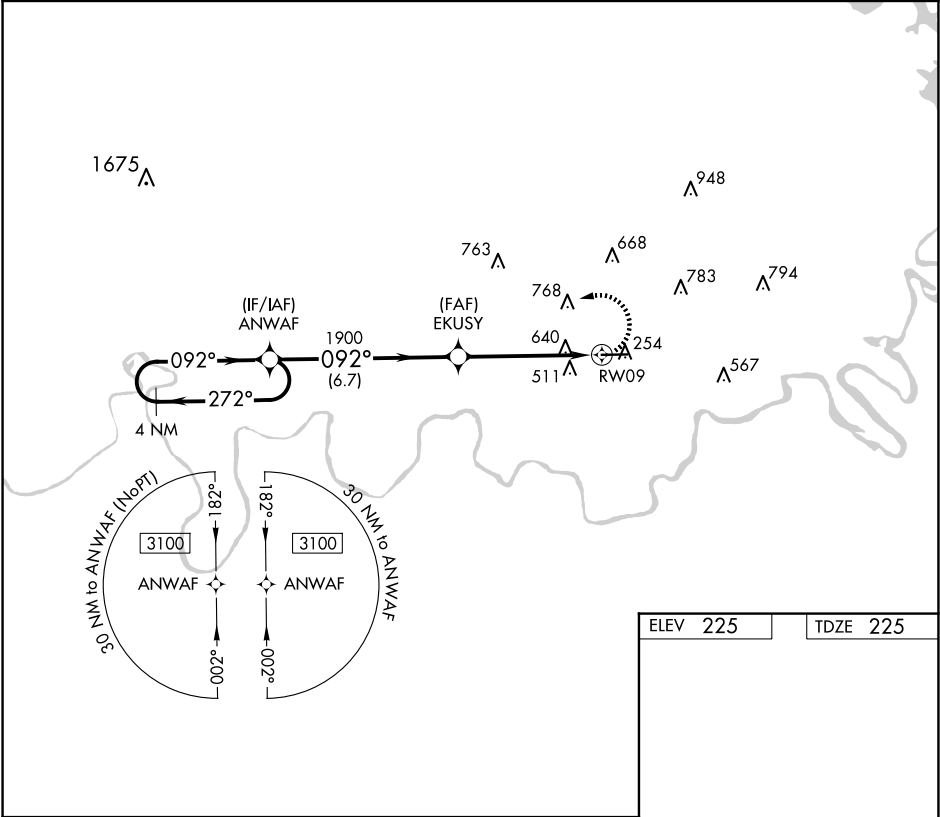
APP CRS	Rwy Idg	5400
092°	TDZE	225
	Apt Elev	225

RNAV (GPS) RWY 9

PRATTVILLE/GROUBY FLD (1A9)

RNP APCH.	MISSED APPROACH: Climbing left turn to 3100 direct ANWAF and hold.
Rwy 9 helicopter visibility reduction below 1 SM NA. When local altimeter setting not received, use Montgomery Rgnl (Dannelly Fld) altimeter setting and increase all MDA 40 feet; increase LNAV Cats C/D visibility ½ SM. Straight-in Rwy 9 NA at night.	

AWOS-3P 118.025	MONTGOMERY APP CON ★ 121.2 269.05	GCO 121.725	UNICOM 122.8 (CTAF) 0
--------------------	--------------------------------------	----------------	--------------------------



4 NM Holding Pattern		Visual Segment - Obstacles.		3100 ANWAF
3100 ← 272° → 092° →		ANWAF		092°
3100		EKUSY		1900
6.7 NM		5.1 NM		RW09
CATEGORY	A	B	C	D
LNAV MDA	980-1 755 (800-1)	980-1¼ 755 (800-1¼)	980-2	755 (800-2)
MIRL Rwy 9-27 0 REIL Rws 9 and 27 0				

SE-4, 07 AUG 2025 to 04 SEP 2025

SE-4, 07 AUG 2025 to 04 SEP 2025