

WAAS CH 63246 W26A	APP CRS 255°	Rwy Idg 4903 TDZE 308 Apt Elev 309
--	------------------------	---

RNAV (GPS) RWY 26

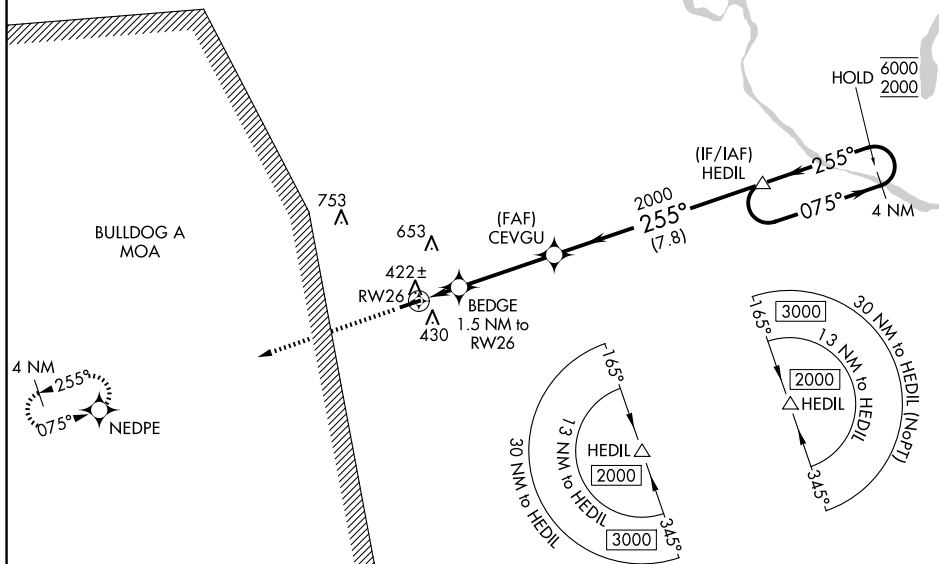
RNP APCH - GPS.

T Rwy 26 helicopter visibility reduction below $\frac{3}{4}$ SM NA.
A NA Baro-VNAV NA. Use AGS altimeter setting.

MISSED APPROACH: Climb to 3000 direct NEDPE and hold, continue climb-in-hold to 3000.

AGS ASOS 132.75	AUGUSTA APP CON ★ 126.8 270.3	CTAF 122.90
---------------------------	---	-----------------------

1889



ELEV	309	D	TDZE	308
------	-----	----------	------	-----

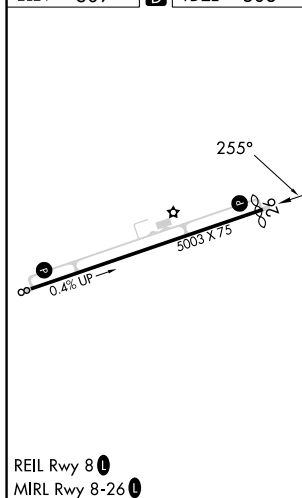


Diagram illustrating the NEDPE 4 NM Holding Pattern. The pattern is centered on the 2000 frequency. The holding pattern is defined by a 1.5 NM radius, a 3.6 NM radius, and a 7.8 NM radius. The pattern is oriented with the inbound leg at 255° and the outbound leg at 075°. The diagram also shows the 840 and 2000 frequencies. The diagram includes a compass rose and a heading indicator.

BURKE COUNTY (BXG)
RNAV (GPS) RWY 26