

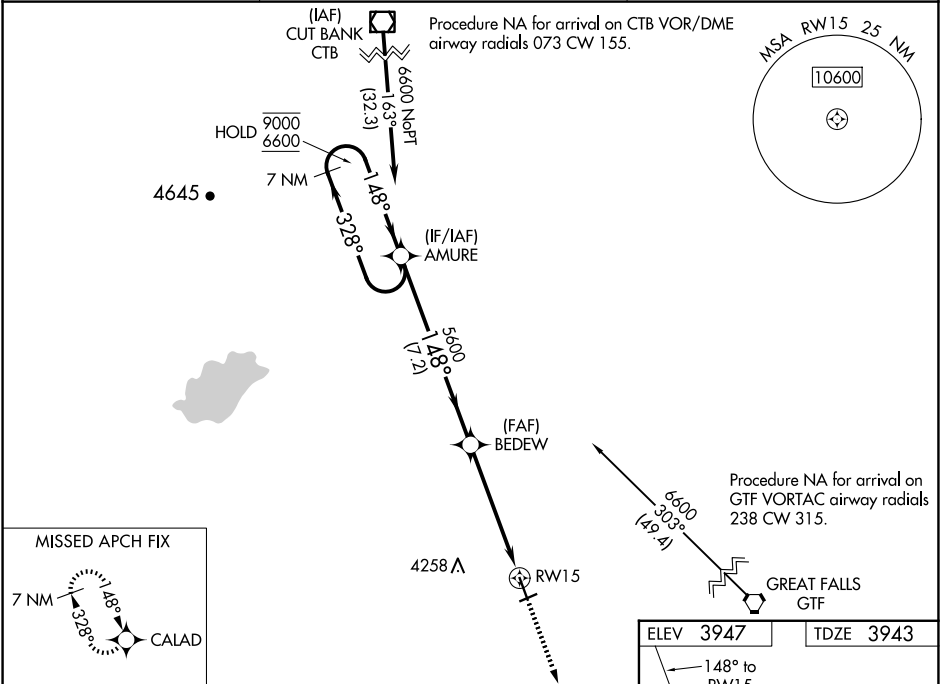
WAAS CH <b>70443</b> <b>W15A</b>	APP CRS <b>148°</b>	Rwy Idg TDZE <b>3943</b> Apt Elev <b>3947</b>
--	------------------------	---

RNAV (GPS) RWY 15

CHOTEAU (CII)

RNP APCH. ▼ ▲NA	For uncompensated Baro-VNAV systems, LNAV/VNAV NA below -22° C or above 54° C.	MISSED APPROACH: Climb to 6200 direct CALAD and hold.
-----------------------	---	---

AWOS-2 <b>119.275</b>	SALT LAKE CITY CENTER <b>133.4 285.4</b>	UNICOM <b>122.8 (CTAF) 0</b>
--------------------------	---	---------------------------------



VGSI and RNAV glidepath not coincident (VGSI Angle 3.00/TCH 24).				
7 NM Holding Pattern				
9000 ← 328° 6600 148° →				
GP 3.00° TCH 45				
7.2 NM 3.7 NM 1.4 NM				
CATEGORY	A	B	C	D
LPV DA	4143-1 200 (200-1)			
LNAV/VNAV DA	4193-1 250 (300-1)			
LNAV MDA	4420-1 477 (500-1)		4420-1¾ 477 (500-1¾)	
CIRCLING	4440-1 493 (500-1)		4600-1¾ 493 (700-1¾) 953 (1000-3)	

