
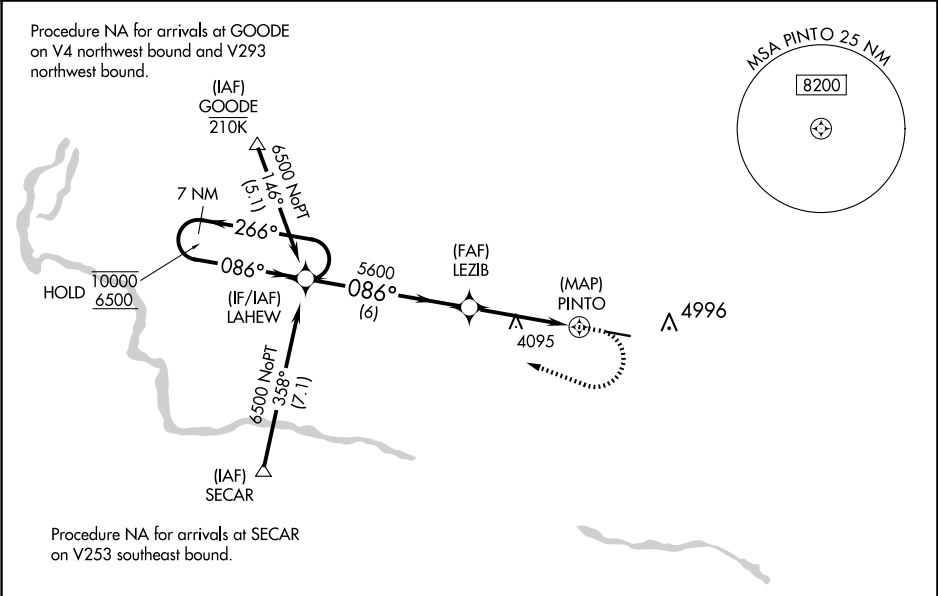


WAAS CH <b>90144</b> <b>W09A</b>	APP CRS <b>086°</b>	Rwy Idg TDZE Apt Elev	<b>5002</b> <b>4019</b> <b>4053</b>
--	------------------------	-----------------------------	---

RNAV (GPS) RWY 9  
JEROME COUNTY (JER)

RNP APCH.	MISSED APPROACH: (Do not exceed 185K until LAHEW) Climb to 4900 then climbing right turn to 6500 direct LAHEW and hold. # Missed approach requires minimum climb of 300 feet per NM to 5200.
 For uncompensated Baro-VNAV systems, LNAV/VNAV NA below -16°C or above 54°C. Circling NA north of Rwy 9-27.	

ASOS <b>135.225</b>	TWIN FALLS APP CON★ <b>126.7 353.75</b>	UNICOM <b>122.8 (CTAF) 0</b>
------------------------	--	---------------------------------



7 NM Holding Pattern		VGS and RNAV glidepath not coincident (VGS Angle 3.00/TCH 40).		4900	6500	LAHEW
10000 6500		LAHEW		LEZIB	*LNAV only	
GP 3.00° TCH 45		5600		*1.6 NM to PINTO		PINTO
266°		086°		6 NM		2.4 NM
086°		5600		1.6 NM		1 NM
086°		5600		1.8% UP		5002 X 75
CATEGORY	A	B	C	D	MIRL Rwy 9-27 0	
LPV DA #	4544-1½		525 (500-1½)			
LPV DA	4624-1¾		605 (600-1¾)			
LNAV/VNAV DA	4674-1⅞		655 (700-1⅞)			
LNAV MDA	4820-1 801 (800-1)	4820-1¼ 801 (800-1¼)	4820-2½	801 (800-2½)		
CIRCLING	4820-1 767 (800-1)	4820-1¼ 767 (800-1¼)	4820-2½	767 (800-2½)		