

EUREKA, KANSAS

AL-6811 (FAA)

24137

VORTAC EMP <u>112.8</u> Chan 75	APP CRS 187°	Rwy Idg 3504 TDZE 1207 Apt Elev 1208
---------------------------------------	------------------------	---

VOR RWY 18
LT WILLIAM M MILLIKEN (13K)

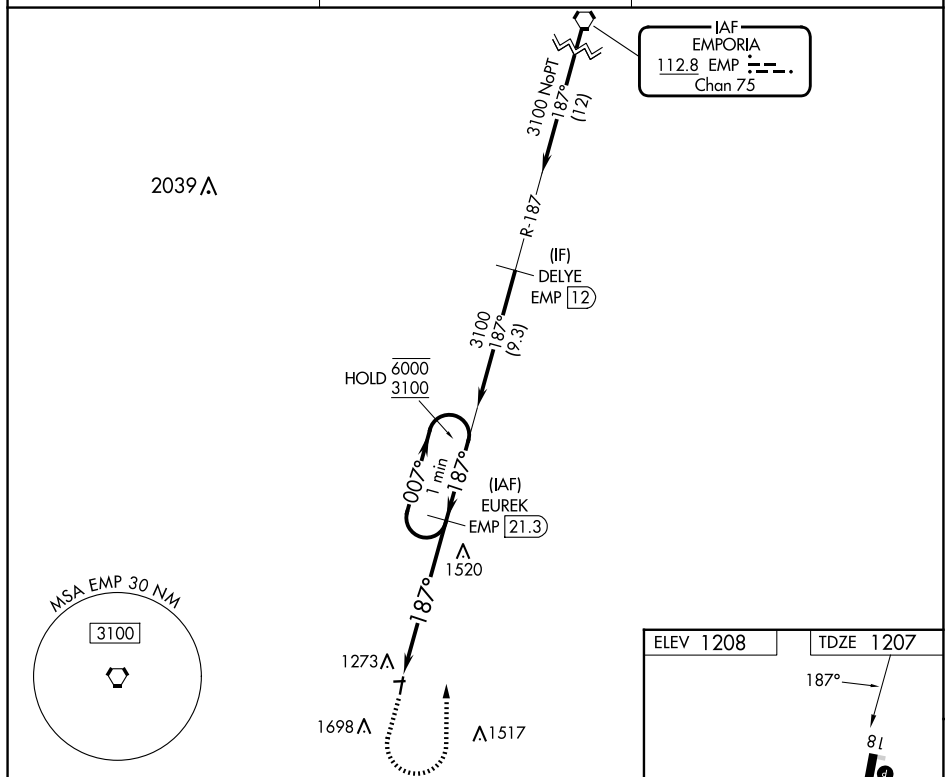
DME required.

- T** Circling NA to Rwy 8 and 26. When local altimeter setting not received, use Emporia altimeter setting: increase all MDAs 80 feet and S-18 Cat C visibility $\frac{1}{4}$ SM, Circling Cat C visibility $\frac{1}{4}$ SM.

MISSED APPROACH: Climb to 2100 then climbing left turn to 3100 on EMP R-187 to EUREK/21.3 DME and hold.

AWOS-3PT
120,975

KANSAS CITY CENTER
120.2 323.2

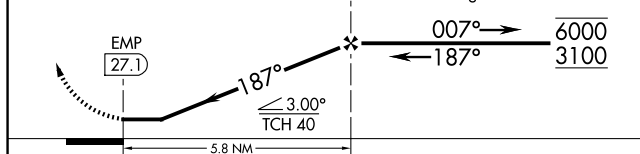
UNICOM
122.8 (CTAF) **L**

NC-2, 07 AUG 2025 to 04 SEP 2025

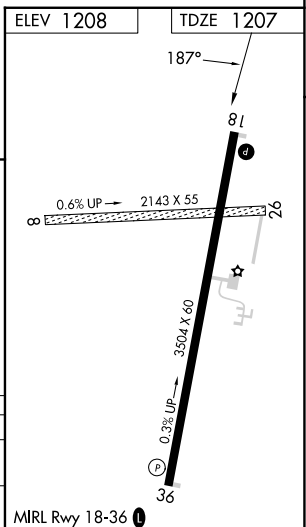
2100 ↑	3100 ← EMP R-187	EUREK EMP 21.3
-----------	---------------------------	----------------------

VGSI and descent angles not coincident (VGSI Angle 3.00/TCH 34).

EUREK
EMP 21.3



CATEGORY	A	B	C	D
S-18	1820-1	613 (700-1)	1820-1 $\frac{3}{4}$ 613 (700-1 $\frac{3}{4}$)	NA
CIRCLING	1820-1	612 (700-1)	2060-2 $\frac{1}{2}$ 852 (900-2 $\frac{1}{2}$)	NA



EUREKA, KANSAS
Amdt 3 16MAY24

37°51'N-96°18'W

LT WILLIAM M MILLIKEN (13K)
VOR RWY 18