

APP CRS	Rwy Idg	3504
189°	TDZE	1207
	Apt Elev	1208

RNAV (GPS) RWY 18

LT WILLIAM M MILLIKEN (13K)

RNP APCH - GPS.

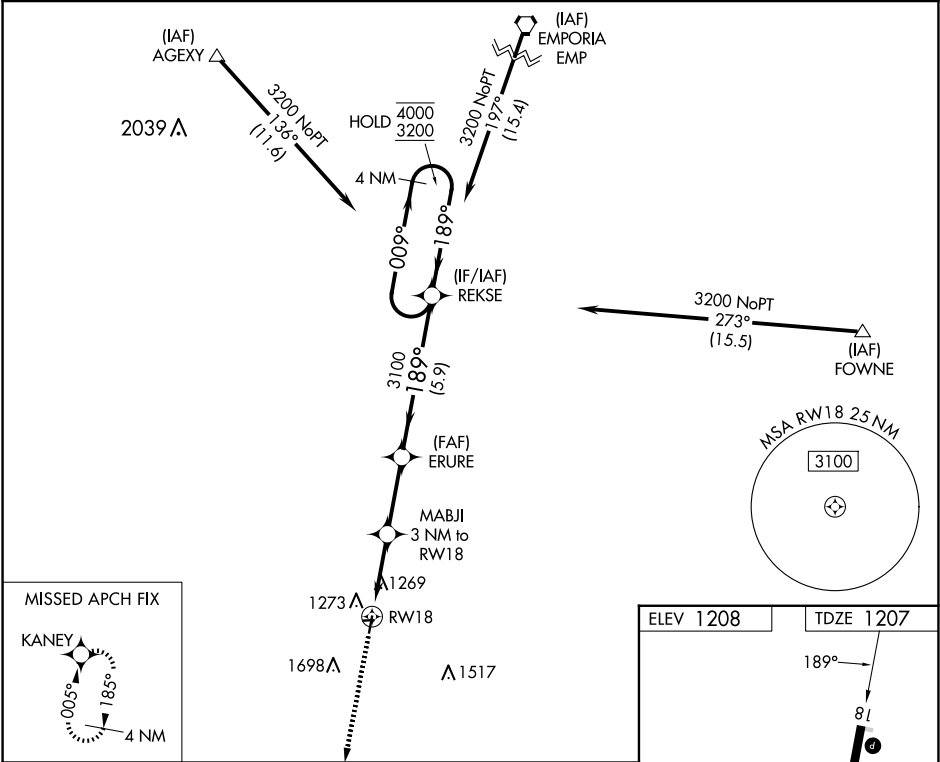
▼

⚠

Circling NA to Rwy 8 and 26. VDP NA when using Emporia altimeter setting. When local altimeter setting not received, use Emporia altimeter setting and increase all MDAs 80 feet and LNAV Cat C visibility ¼ SM, Circling Cat C visibility ¼ SM.

MISSED APPROACH: Climb to 3200 direct KANEY and hold.

AWOS-3PT 120.975	KANSAS CITY CENTER 120.2 323.2	UNICOM 122.8 (CTAF) 0
---------------------	-----------------------------------	--------------------------



3200 KANEY

VGSI and descent angles not coincident (VGSI Angle 3.00/TCH 34).

REKSE

4 NM Holding Pattern

009° 4000

189° 3200

MABJI 3 NM to RW18

ERURE

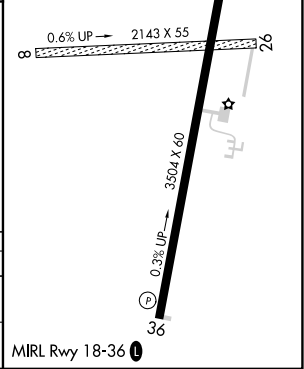
1.1 NM to RW18

1.9 NM

2.8 NM

5.9 NM

CATEGORY	A	B	C	D
LNAV MDA	1600-1 393 (400-1)	1600-1½ 393 (400-1½)	1600-1½ 393 (400-1½)	NA
CIRCLING	1640-1 432 (500-1)	1660-1 452 (500-1)	2060-2½ 852 (900-2½)	NA



NC-2, 07 AUG 2025 to 04 SEP 2025

NC-2, 07 AUG 2025 to 04 SEP 2025