

WAAS CH 70618 W13A	APP CRS 127°	Rwy Idg TDZE Apt Elev	4201 1402 1402
--	------------------------	-----------------------------	---

RNAV (GPS) RWY 13

BARNES COUNTY MUNI (BAC)

RNP APCH - GPS.

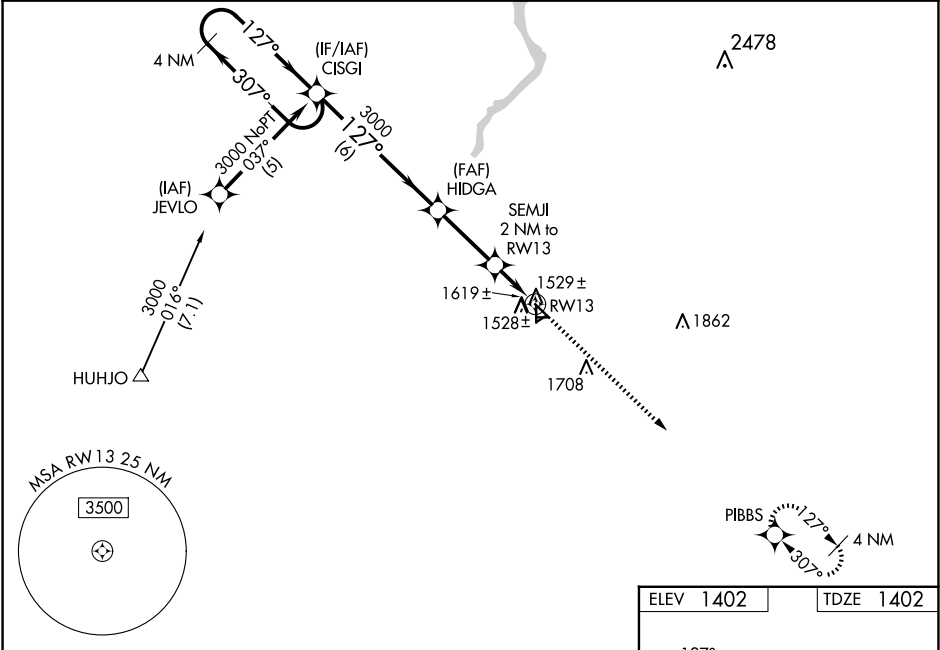
▼

▲

Baro-VNAV NA when using Jamestown altimeter setting. For uncompensated Baro-VNAV systems, LNAV/VNAV NA below -17°C or above 54°C. When local altimeter setting not received, use Jamestown altimeter setting: increase LPV DA to 1729 feet and all visibilities ¼ SM; increase LNAV/VNAV DA to 1966 and all visibilities ¼ SM; increase all MDA 80 feet and visibility LNAV Cat C and Circling Cat C ¼ SM. Circling NA to Rwy 5, 8, 17, 23, 26 and 35. Rwy 13 helicopter visibility reduction below ¾ SM NA.

MISSED APPROACH: Climb to 3100 direct PIBBS and hold.

AWOS-3 118.725	MINNEAPOLIS CENTER 124.2 270.3	UNICOM 122.8 (CTAF) 1
--------------------------	--	--



4 NM Holding Pattern		VGSI and RNAV glidepath not coincident (VGSI Angle 3.00/TCH 28).		3100	PIBBS
CISHI		HIDGA		3000	SEMJI 2 NM to RWY 13
3000 ← 307°		127° →		3000	*LNAV only
GP 3.00°		TCH 40		*2040	RWY 13
		6 NM		2.8 NM	2 NM
CATEGORY	A	B	C	D	
LPV DA	1652-1	250 (300-1)		NA	
LNAV/VNAV DA	1889-1¾	487 (500-1¾)		NA	
LNAV MDA	1880-1	478 (500-1)	1880-1¼ 478 (500-1¼)	NA	
CIRCLING	1920-1 518 (600-1)	2000-1 598 (600-1)	2020-1¾ 618 (700-1¾)	NA	

