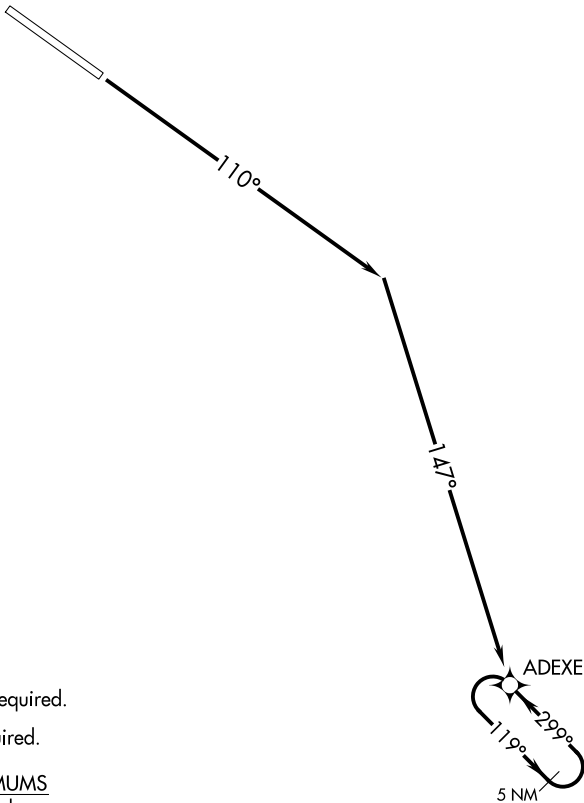


BIG SKY APP CON  
119.6 269.4  
CTAF  
122.7



- NOTE: RNAV 1.
- NOTE: RADAR required.
- NOTE: GPS required.

TAKEOFF MINIMUMS  
Rwy 11: Standard.

TAKEOFF OBSTACLE NOTES  
Rwy 11: Trees, fence, building, pole, and vehicle on road beginning 77' from DER, 82' left of centerline, up to 71' AGL/2611' MSL.  
Pole 478' from DER, 298' right of centerline, 27' AGL/2548' MSL.  
Pole 1043' from DER, 340' right of centerline, 35' AGL/2557' MSL.

NOTE: Chart not to scale.

DEPARTURE ROUTE DESCRIPTION

TAKEOFF RUNWAY 11: Climb heading 110° to intercept course 147° to ADEXE then continue climb in ADEXE holding pattern. Expect further clearance when reaching 5000.