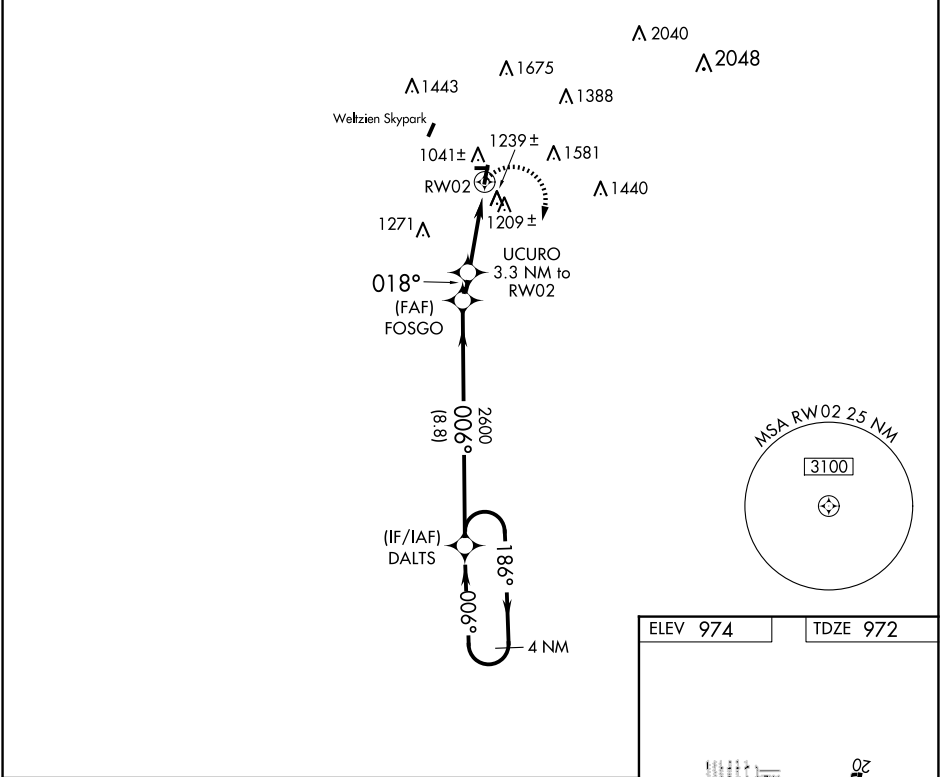


APP CRS	Rwy Idg	3400
018°	TDZE	972
	Apt Elev	974

RNAV (GPS) RWY 2

WADSWORTH MUNI (3G3)

RNP APCH.		MISSED APPROACH: Climbing right turn to 3100 direct DALTS and hold.
NA	Rwy 2 helicopter visibility reduction below 1 SM NA. Procedure NA at night. Circling NA west of Rwy 2-20. Use Wooster altimeter setting, when not received, use Akron-Canton Rgnl altimeter setting and increase all MDA 40 feet and LNAV visibility Cat C 1/8 SM, Circling Cat B 1/4 SM.	
BJJ ASOS 118.075	CLEVELAND APP CON ★ 125.5 371.875	UNICOM 122.8 (CTAF)



4 NM Holding Pattern		DALTS	FOSGO	UCURO 3.3 NM to RW02	3100 DALTS
3100 ← 186°		006° →	006°	3.50° TCH 30	018°
VGSI and descent angles not coincident (VGSI Angle 3.00/TCH 37).		2600	2220	RW02	
		8.8 NM	1 NM	3.3 NM	
CATEGORY	A	B	C	D	
LNAV MDA	1620-1	648 (700-1)	1620-17/8 648 (700-17/8)	NA	
CIRCLING	1660-1 686 (700-1)	1760-1 786 (800-1)	1980-3 1006 (1100-2)	NA	

