

VORTAC VUZ	APP CRS	Rwy Idg	N/A
114.4	302°	TDZE	N/A
Chan 91		Apt Elev	483

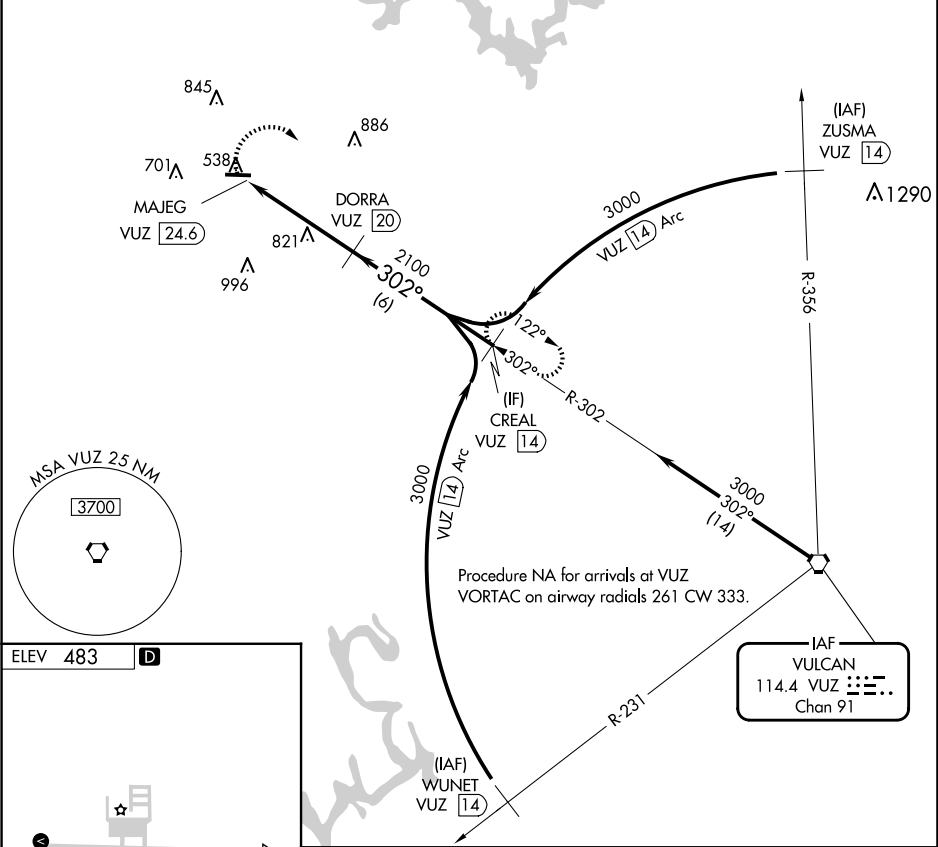
VOR/DME-A

WALKER COUNTY/BEVILL FLD (JFXX)

When local altimeter setting not received, use Birmingham altimeter setting and increase all MDA 120 feet and Cat C/D visibility ¼ mile.

MISSED APPROACH: Climbing right turn to 3000 on VUZ VORTAC R-302 to CREAL/14 DME and hold.

AWOS-3PT 119.225	BIRMINGHAM APP CON 127.675 338.2	GCO 121.725	UNICOM 123.075 (CTAF)
---------------------	-------------------------------------	----------------	--------------------------



ELEV 483

MIRL Rwy 9-27
REIL Rwy 9 and 27

	3000	CREAL VUZ 14		3000	CREAL VUZ 14
	VUZ R-302			DORRA VUZ 20	
		MAJEG VUZ 24.6		2100	
		4.6 NM		6 NM	
CATEGORY	A	B	C	D	
CIRCLING	1160-1 677 (700-1)	1160-1¼ 677 (700-1¼)	1160-2 677 (700-2)	1360-2¾ 877 (900-2¾)	

SE-4, 07 AUG 2025 to 04 SEP 2025

SE-4, 07 AUG 2025 to 04 SEP 2025