

WAAS  
Ch **49025**  
**W27A**

APP CRS  
**273°**

Rwy Idg  
TDZE **481**  
Apt Elev **483**

**RNAV (GPS) RWY 27**

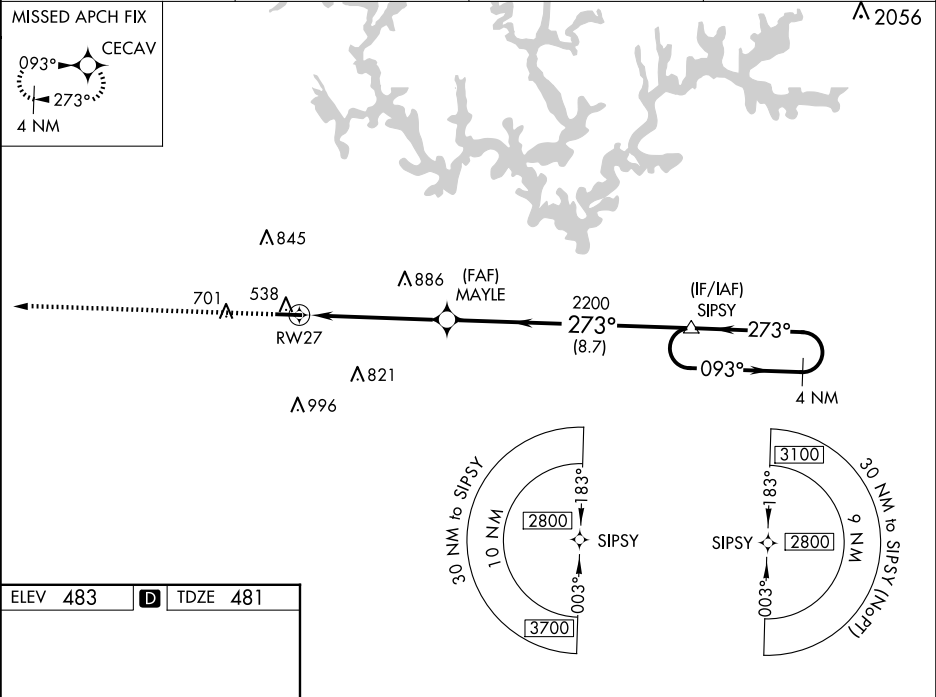
WALKER COUNTY/BEVILL FLD (JF'X)

⚠

Baro-VNAV NA when using Birmingham altimeter setting. For uncompensated Baro-VNAV systems, LNAV/VNAV NA below -15°C (5°F) or above 40°C (104°F). DME/DME RNP-0.3 NA. Helicopter visibility reduction below ¾ SM NA. VDP NA with Birmingham altimeter setting. When local altimeter setting not received, use Birmingham altimeter setting and increase all DA 104 feet and all MDA 120 feet. Increase LPV all Cats, LNAV/VNAV all Cats, LNAV Cat C/D and Circling Cat C visibility ¾ mile and Circling Cat D visibility ½ mile.

MISSED APPROACH:  
Climb to 2800 direct  
CECAV and hold.

AWOS-3PT <b>119.225</b>	BIRMINGHAM APP CON <b>127.675 338.2</b>	GCO <b>121.725</b>	UNICOM <b>123.075 (CTAF) 0</b>
----------------------------	--	-----------------------	-----------------------------------



ELEV **483**

**D**

TDZE **481**

5004 X 100

27

273°

2800

CECAV

\* LNAV only

RW27

\* 1.6 NM to RW27

MAYLE

2200

273°

SIPSY

4 NM Holding Pattern

093°

2800

273°

GP 3.00°

TCH 44

1.6 NM

3.6 NM

8.7 NM

CATEGORY	A	B	C	D
LPV DA	789-1 308 (300-1)			
LNAV/ DA VNAV	964-1 5/8 483 (500-1%)			
LNAV MDA	1040-1	559 (600-1)	1040-1 5/8	559 (600-1%)
CIRCLING	1040-1 557 (600-1)	1080-1 597 (600-1)	1160-2 677 (700-2)	1360-2 3/4 877 (900-2 3/4)