

VOR/DME ZZV
114.95
Chan **96(Y)**

APP CRS
229°

Rwy Idg
TDZE **1047**
Apt Elev **1051**

3498
1047
1051

VOR/DME RWY 26
ED NEWLON FLD (I86)

⚠

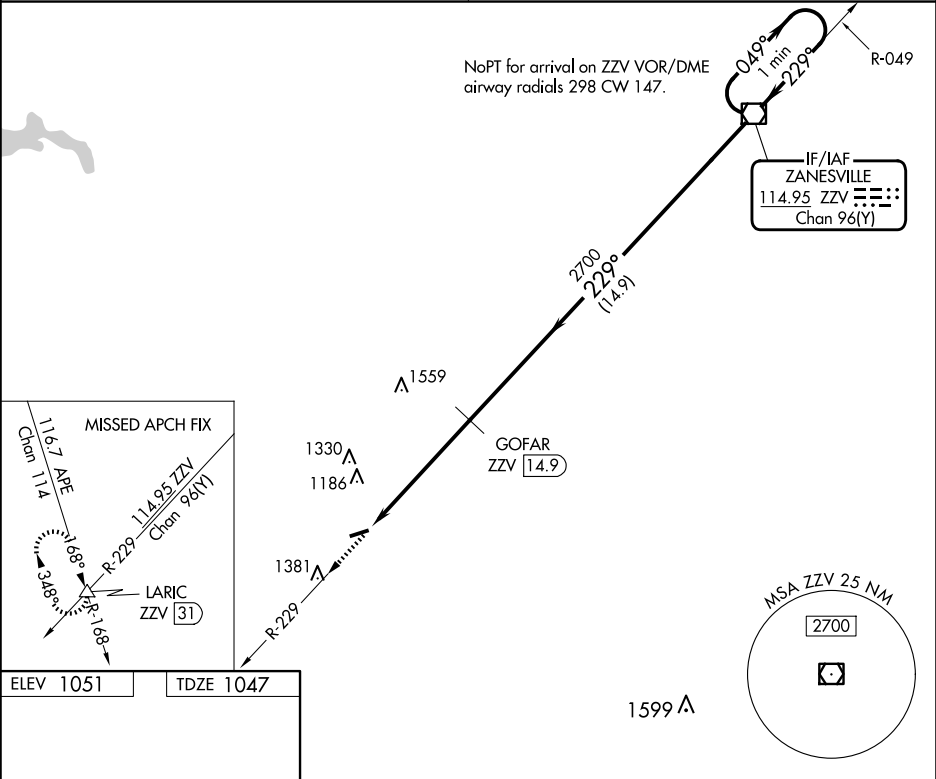
NA

Visibility reduction by helicopters NA. Use Zanesville altimeter setting; when not received, use Lancaster altimeter setting and increase all MDA 20 feet. Procedure NA at night.

MISSED APPROACH: Climb to 3000 via ZZV VOR/DME R-229 to LARIC INT/ZZV 31 DME and hold.

INDIANAPOLIS CENTER
124.45 323.275

UNICOM
122.8 (CTAF) 0



ELEV 1051

TDZE 1047

3000

ZZV R-229

LARIC
ZZV 31

VGSI and descent angles not coincident (VGSI Angle 4.00/TCH 28).

ZZV VOR/DME

One Minute Holding Pattern

229°

0.3% UP

3498 X 75

2700

229°

049°

3000

ZZV 20.3

GOFAR ZZV 14.9

2.82°

TCH 40

5.4 NM

14.9 NM

CATEGORY	A	B	C	D
S-26	1620-1 573 (600-1)	1620-1¼ 573 (600-1½)	1620-1½ 573 (600-1½)	NA
CIRCLING	1620-1 569 (600-1)	1620-1¼ 569 (600-1½)	1620-1½ 569 (600-1½)	NA

EC-2, 07 AUG 2025 to 04 SEP 2025

EC-2, 07 AUG 2025 to 04 SEP 2025