

EL RENO, OKLAHOMA

AL-6801 (FAA)

24361

APP CRS CH 45643 W17A	APP CRS 176°	Rwy Idg 5600 TDZE 1420 Apt Elev 1420
---	------------------------	---

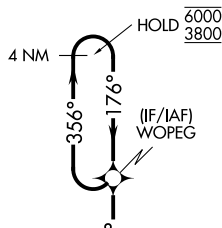
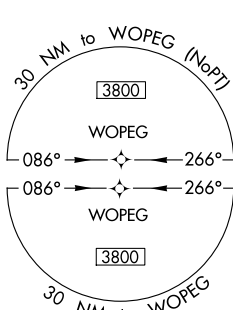
RNAV (GPS) RWY 17
EL RENO RGNL (RQO)

RNP APCH-GPS.

T Circling NA to Rwy 18 and 36. Circling Rwy 35 NA at night.
A Rwy 17 helicopter visibility reduction below $\frac{3}{4}$ SM NA. For uncompensated Baro-VNAV systems, LNAV/VNAV NA below -17°C or above 54°C.

MISSED APPROACH: Climb to 3800 direct WUSEN and hold.

AWOS-3 118.475	OKE CITY APP CON 124.6 266.8	UNICOM 122.8 (CTAF) 1
--------------------------	--	--

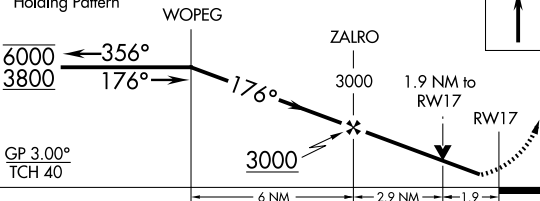
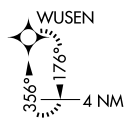



Λ 2283

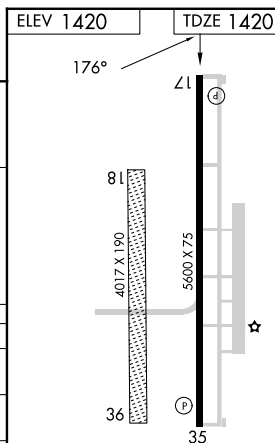
Λ 1926

A 1787

RW17  A 1579



CATEGORY	A	B	C	D
LPV DA	1670-3/4 250 (300-3/4)			
LNAV/VNAV DA	1754-1 334 (400-1)			
LNAV MDA	1860-1 440 (500-1)		1860-1 1/4 440 (500-1 1/4)	
 CIRCLING	1900-1 480 (500-1)		2140-2 720 (800-2)	2140-2 1/4 720 (800-2 1/4)



MIRL Rwy 17-35 **L**
REIL Rwy 17 and 35 **L**

EL RENO, OKLAHOMA

Amdt 1A 26DEC24

35°28'N-98°00'W

EL RENO RGNI (RQO)

RNAV (GPS) RWY 17

SC-1, 07 AUG 2025 to 04 SEP 2025