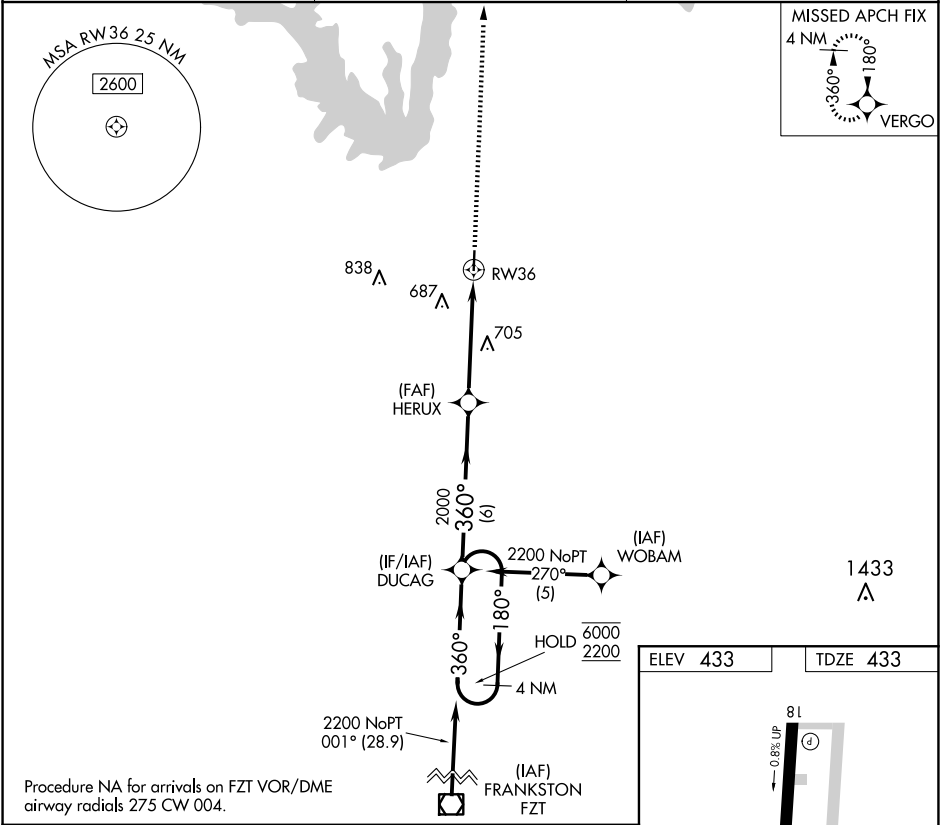


APP CRS	Rwy Idg	4002
360°	TDZE	433
	Apt Elev	433

RNAV (GPS) RWY 36
WOOD COUNTY/COLLINS FLD (JDD)

RNP APCH.	MISSED APPROACH: Climb to 2100 direct VERGO and hold.
Rwy 36 helicopter visibility reduction below 1 SM NA. Straight-in and Circling Rwy 36 NA at night.	

AWOS-3 118.9	LONGVIEW APP CON ★ 128.75 379.15	UNICOM 122.8 (CTAF) 0
-----------------	-------------------------------------	--------------------------



4 NM Holding Pattern				VGSI and descent angles not coincident (VGSI Angle 3.00/TCH 42).	2100	VERGO
6000 ← 180° 2200 → 360°				HERUX	↑	✧
360°				2000	RW36	
6 NM				3.04° TCH 30	4.8 NM	
CATEGORY	A	B	C	D		
LNAV MDA	960-1	527 (600-1)	960-1½ 527 (600-1½)	NA		
CIRCLING	960-1 527 (600-1)	1000-1 567 (600-1)	1000-1½ 567 (600-1½)	NA		

