

APP CRS	Rwy Idg	4002
180°	TDZE	421
	Apt Elev	433

RNAV (GPS) RWY 18

WOOD COUNTY/COLLINS FLD (JDD)

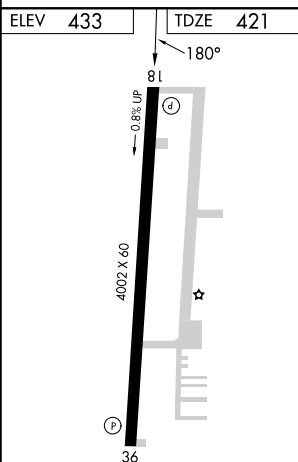
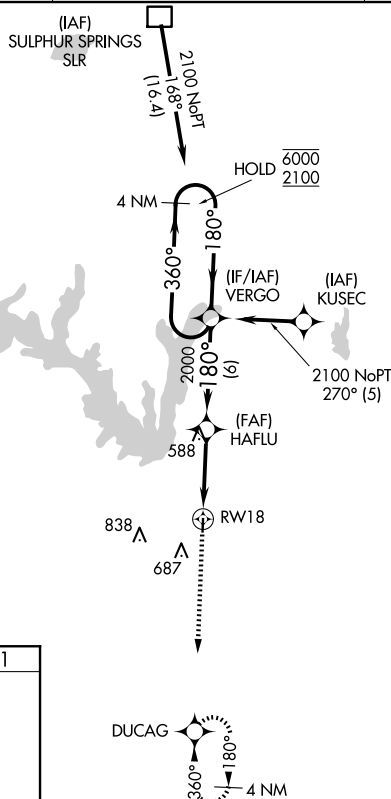
RNP APCH - GPS.

T	Circling Rwy 36 NA at night.
A	Rwy 18 helicopter visibility reduction below $\frac{3}{4}$ SM NA.

MISSED APPROACH: Climb to 2200 direct DUCAG and hold.

AWOS-3
118.9

LONGVIEW APP CON ★
128.75 379.15

UN|COM
122.8 (CTAF) **L**MIRL Rwy 18-36 **L**

MINEOLA/QUITMAN, TEXAS

Orig-E 23FEB23

32°45'N-95°30'W

WOOD COUNTY/COLLINS FLD (JDD)
RNAV (GPS) RWY 18