

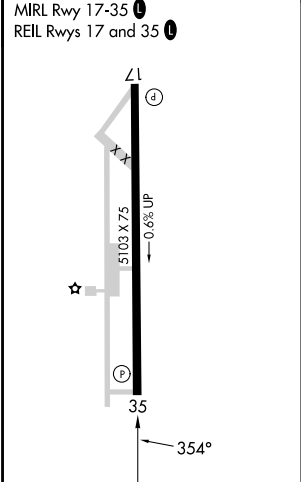
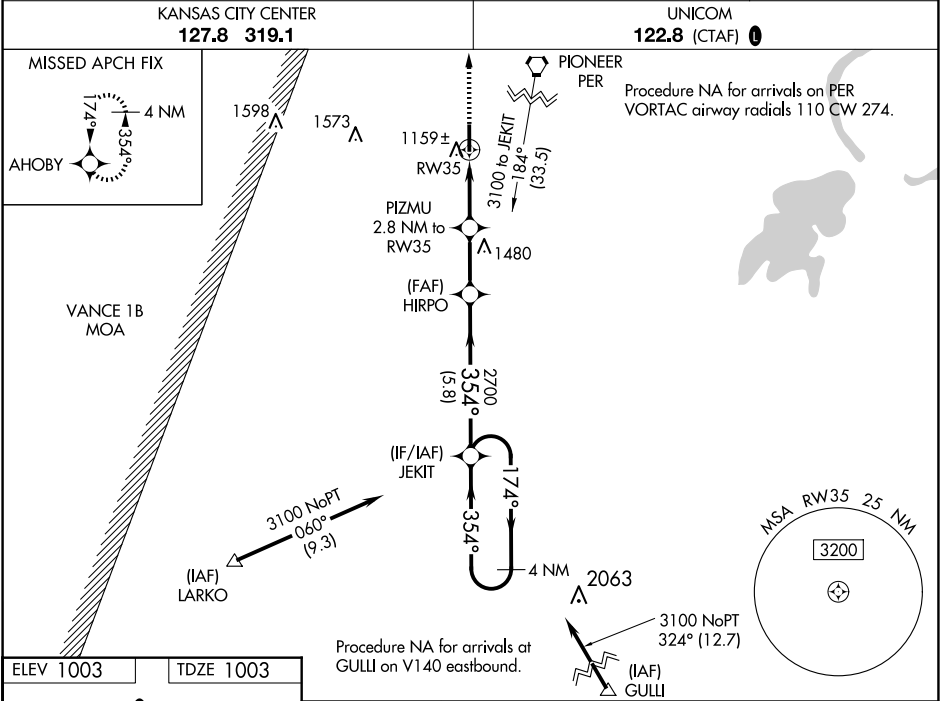
WAAS CH 61140 W35A	APP CRS 354°	Rwy Idg TDZE 1003 Apt Elev 1003
--	------------------------	---

RNAV (GPS) RWY 35
PERRY MUNI (F22)

NA

For uncompensated Baro-VNAV systems, procedure NA below -16°C (4°F) or above 54°C (130°F). DME/DME RNP-0.3 NA. Baro-VNAV and VDP NA when using Ponca City altimeter setting. Rwy 35 helicopter visibility reduction below ¾ SM NA. Obtain local altimeter setting on CTAF; when not received, use Ponca City altimeter setting and increase all DA 53 feet and all visibility ½ SM, increase all MDAs 60 feet and Cat C visibility ¼ SM.

MISSED APPROACH:
Climb to 3000 direct AHOBY and hold.



ELEV 1003 TDZE 1003		3000 AHOBY		4 NM Holding Pattern	
* LNAV only		PIZMU 2.8 NM to RW35		174° → 3100	
* 1.2 NM to RW35		HIRPO 2700		← 354°	
RW35		JEKIT		GP 3.00° TCH 46	
1.2 1.6 2.4 NM 5.8 NM		1940*			
CATEGORY	A	B	C	D	
LPV DA	1253-¾	250 (300-¾)		NA	
LNAV/VNAV DA	1330-1⅛	327 (400-1⅛)		NA	
LNAV MDA	1420-1	417 (500-1)	1420-1⅛ 417 (500-1⅛)	NA	
CIRCLING	1480-1	477 (500-1)	1620-1¾ 617 (700-1¾)	NA	