

WAAS CH 72921 W17A	APP CRS 174°	Rwy Idg TDZE 994 Apt Elev 1002
--	------------------------	--

RNAV (GPS) RWY 17

PERRY MUNI (F22)

RNP APCH.

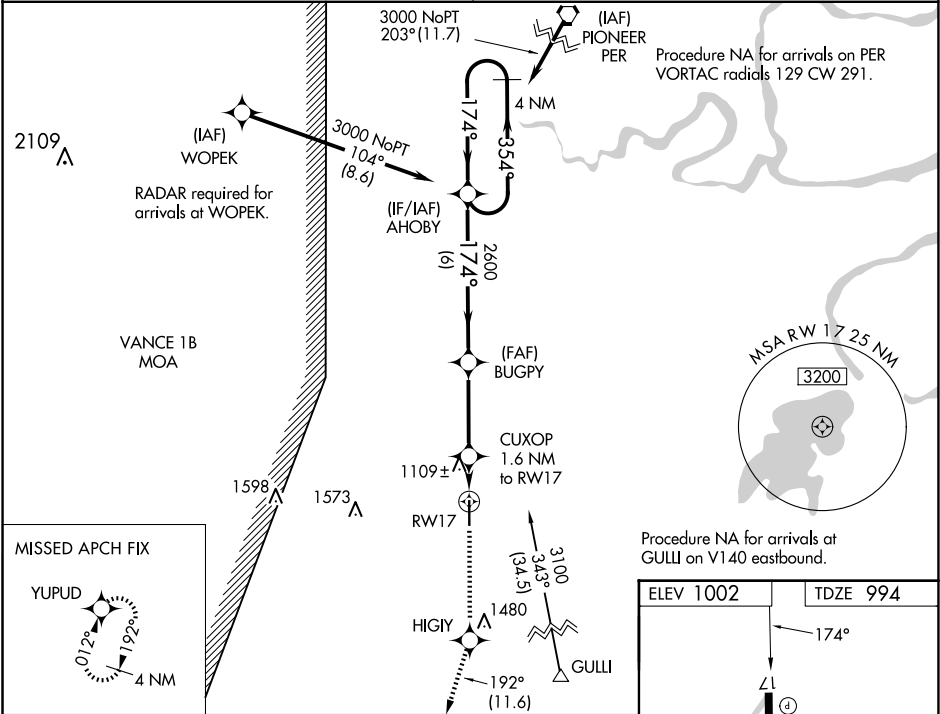
▼

▲ NA

Baro-VNAV NA when using KPNC altimeter setting. For uncompensated Baro-VNAV systems, LNAV/VNAV NA below -16°C or above 54°C. When VGSI inop, procedure NA at night. Rwy 17 helicopter visibility reduction below 1 SM NA. Obtain local altimeter setting on CTAF; when not received, use Ponca City altimeter setting and increase all DA 53 feet, all MDA 60 feet and increase LNAV/VNAV all Cats and LNAV Cat C visibility ¼ mile.

MISSED APPROACH: Climb to 3000 direct HIGY and on track 192° to YUPUD and hold.

KANSAS CITY CENTER 127.8 319.1	UNICOM 122.8 (CTAF) 0
--	---------------------------------



4 NM Holding Pattern		AHOBY	*LNAV only	3000 ↑	HIGY ✧	tr 192°	YUPUD ✧
3000 ← 354° 174° →		2600	BUGPY	CUXOP 1.6 NM to RW17		RW17	
GP 3.00° TCH 37°		174°	2600	*1520			
		6 NM	3.4 NM	1.6			
CATEGORY	A	B	C	D			
LPV DA	1244-1 250 (300-1)			NA			
LNAV/VNAV DA	1434-1½ 440 (500-1½)			NA			
LNAV MDA	1360-1 366 (400-1)		1360-1⅛ 366 (400-1⅛)		NA		

