

APP CRS  
051°

Rwy Idg  
2500

TDZE  
1209

Apt Elev  
1209

RNAV (GPS) RWY 4

SEAMANS FLD (9N3)

▼

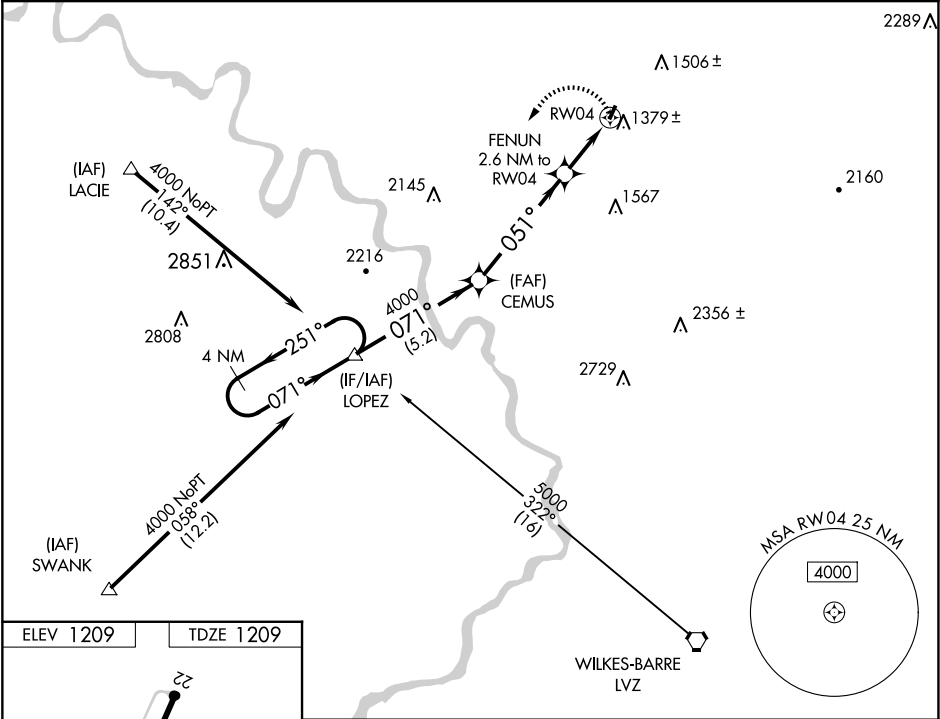
▲ NA

DME/DME RNP-0.3 NA.  
Obtain local altimeter setting on CTAF; when not received,  
use Wilkes-Barre/Scranton Intl altimeter setting.  
VDP NA when using Wilkes-Barre/Scranton Intl altimeter setting.

MISSED APPROACH: Climbing left  
turn to 4000 direct LOPEZ and hold.

WILKES-BARRE APP CON  
120.95 256.7

UNICOM  
122.7 (CTAF) 0



ELEV 1209

TDZE 1209

4 NM Holding Pattern

LOPEZ

CEMUS

4000

LOPEZ

4000

251°

071°

071°

4000

051°

2180

3.49°

TCH 40

5.2 NM

4.9 NM

1.5 NM

1.1

2.6 NM to RWY04

1.1 NM to RWY04

RWY04

CATEGORY	A	B	C	D
LNAV MDA	1 640-1	431 (500-1)	NA	
CIRCLING	1720-1 511 (600-1)	1780-1 571 (600-1)	NA	
WILKES-BARRE/SCRANTON INTL ALTIMETER SETTING MINIMUMS				
LNAV MDA	1720-1	511 (600-1)	NA	
CIRCLING	1800-1 591 (600-1)	1860-1 651 (700-1)	NA	