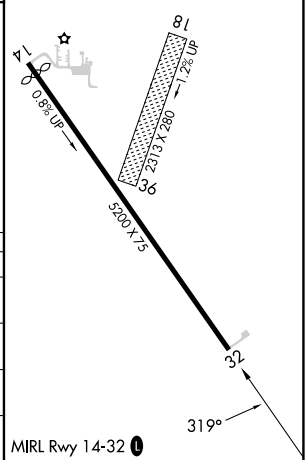
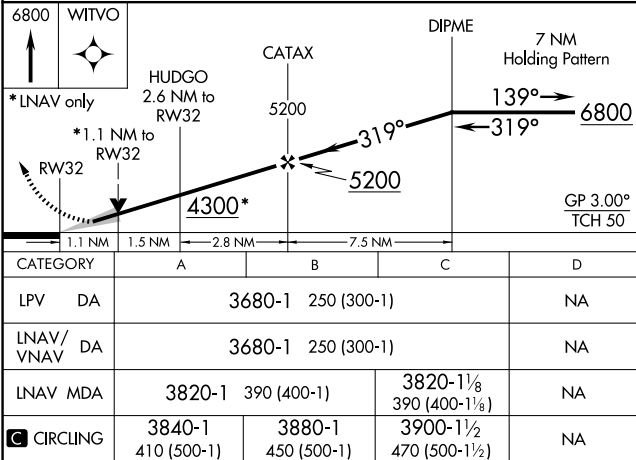
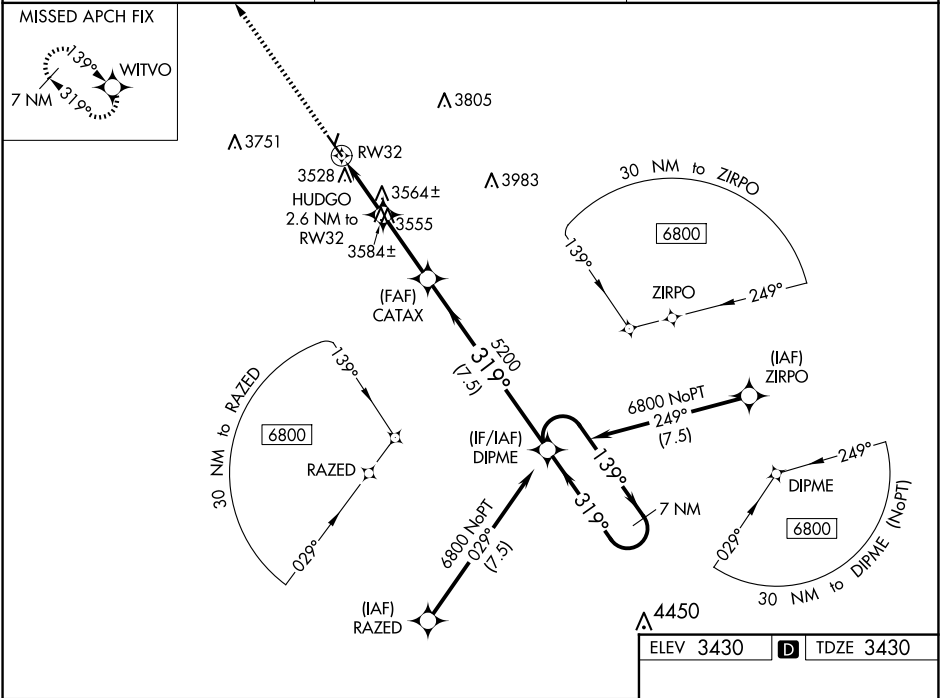


WAAS CH 45839 W32A	APP CRS 319°	Rwy Ldg TDZE Apt Elev	5200 3430 3430
--	------------------------	-----------------------------	---

RNAV (GPS) RWY 32
CHEYENNE COUNTY MUNI (SYF)

RNP APCH. MISSED APCH FIX Circling NA to Rwy 18 and 36. For uncompensated Baro-VNAV systems, LNAV/VNAV NA below -21°C or above 54°C.	MISSED APPROACH: Climb to 6800 direct WITVO and hold, continue climb-in-hold to 6800.
--	---

AWOS-3P 118.925	DENVER CENTER 132.7 226.675	UNICOM 122.8 (CTAF) 0
---------------------------	---------------------------------------	---------------------------------



ST FRANCIS, KANSAS Orig-A 28FEB19	CHEYENNE COUNTY MUNI (SYF) RNAV (GPS) RWY 32
--------------------------------------	---